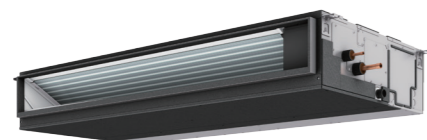


Medium static pressure type

PEFY-P VMA(L)-E4



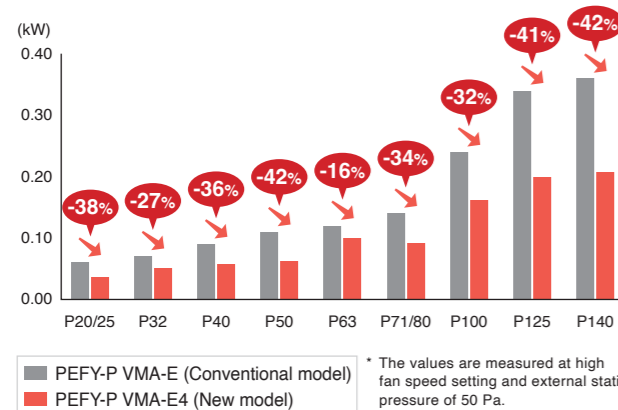
PEFY-P VMA(L)-E4



Less power consumption

The shape of fan wing and casing is improved to provide more smooth airflow. Besides, the drain pump motor is changed from AC motor to high-efficient DC motor. Operation efficiency is increased by the air flow and motor, which realizes up to 42% reduction in energy consumption (P50/140).

Comparison of energy consumption in cooling operation



External static pressure is settable up to 150 Pa (VMA(L)-E4)

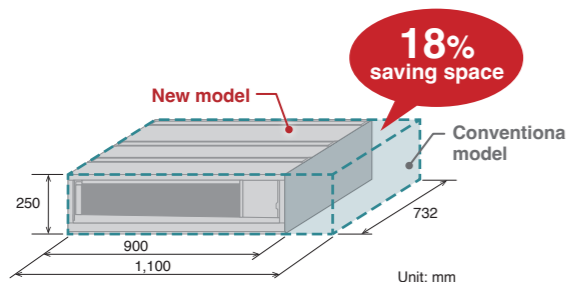
Five-stage external static pressure settings provide flexibility for duct extension, branching, and air outlet configuration and are adjustable to meet different application conditions. Setting ranges to maximum of 150 Pa.

External static pressure settings

Series	20	25	32	40	50	63	71	80	100	125	140	
PEFY-P VMA(L)-E4	35/50/70/100/150 Pa						40/50/70/100/150 Pa					

Compact unit requires less installation space (applicable to the PEFY-P63VMA-E4 model only)

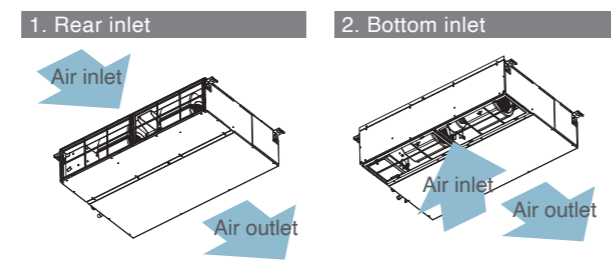
The use of new fan with improved air pathway helps to reduce the size of the P63 model unit. The P63 model unit is 200 mm less in width and fits into tighter ceiling space.



Air inlet direction can be easily changed

By simply switching the closing board and air filter, the inlet layout can be changed from the rear inlet to the bottom inlet. (At factory shipment: Rear inlet)

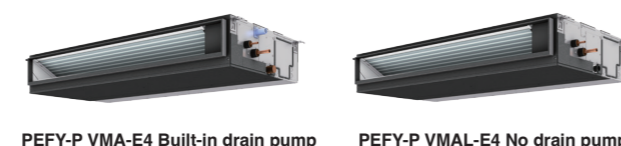
Two air inlet options can be chosen, rear or bottom:



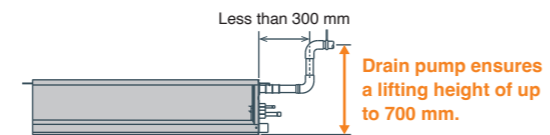
* Unit with a bottom inlet make more noise than those with a rear inlet. It is recommended that the rear inlet be selected when installing the units in rooms that should be quiet, such as bedrooms.

Drain pump is optionally selectable

The lineup consists of two types: models with or without a built-in drain pump, thus allowing more freedom in piping layout design.



Built-in drain pump PEFY-P VMA-E4, PEFY-P-VMA3/4-E
No drain pump PEFY-P VMA(L)-E4



Specifications

* [] is in case of PEFY-P VMA(L)-E4.

Model	PEFY-P32VMA(L)-E4	PEFY-P40VMA(L)-E4	PEFY-P50VMA(L)-E4	PEFY-P63VMA(L)-E4
Power source	1-phase 220-230-240 V 50/60 Hz			
Cooling capacity (Nominal)	*1 kW: 3.6 *1 BTU/h: 12,300	4.5 15,400	5.6 19,100	7.1 24,200
Power input (Nominal)	*2 kW: 0.044 [0.042] *2 (220-230-240 V) A: 0.36 - 0.34 - 0.33	0.047 [0.045] 0.39 - 0.37 - 0.36	0.066 [0.064] 0.53 - 0.51 - 0.49	0.087 [0.085] 0.69 - 0.66 - 0.63
Heating capacity (Nominal)	*3 kW: 4.0 *3 BTU/h: 13,600	5.0 17,100	6.3 21,500	8.0 27,300
Power input (Nominal)	*2 kW: 0.042 *2 (220-230-240 V) A: 0.36 - 0.34 - 0.33	0.045 0.39 - 0.37 - 0.36	0.064 0.53 - 0.51 - 0.49	0.085 0.69 - 0.66 - 0.63
External finish	Galvanized steel plate			
External dimension (mm)	250 x 700 x 732	250 x 900 x 732	250 x 900 x 732	250 x 900 x 732
H x W x D (in.)	9-7/8 x 27-9/16 x 28-7/8	9-7/8 x 35-7/16 x 28-7/8	9-7/8 x 35-7/16 x 28-7/8	9-7/8 x 35-7/16 x 28-7/8
Net weight (kg [lbs])	21.5 (49) [21 (47)]	26 (58) [25.5 (58)]	26 (58) [25.5 (58)]	27 (60) [26.5 (60)]
Heat exchanger	Cross fin (Aluminum fin and copper tube)			
FAN	Type x Quantity: Sirocco fan x 1	Sirocco fan x 2	Sirocco fan x 2	Sirocco fan x 2
External static press. (*4) (Pa)	35 - <50> - <70> - <100> - <150>	35 - <50> - <70> - <100> - <150>	35 - <50> - <70> - <100> - <150>	35 - <50> - <70> - <100> - <150>
Motor Type	DC motor			
Motor output (kW)	0.085	0.121	0.121	0.121
Air flow rate (Lo-Mid-Hi) (m³/min)	7.5 - 9.0 - 10.5	10.0 - 12.0 - 14.0	12.0 - 14.5 - 17.0	13.5 - 16.0 - 19.0
(L/s)	125 - 150 - 175	167 - 200 - 233	200 - 242 - 283	225 - 267 - 317
(cfm)	265 - 318 - 371	353 - 424 - 494	424 - 512 - 600	477 - 565 - 671
Sound pressure level (measured in anechoic room) (Lo-Mid-Hi) (*2 *5) (dB <A>)	24.0 - 28.0 - 31.0	24.0 - 29.0 - 32.0	25.0 - 32.0 - 35.0	28.0 - 32.0 - 36.0
Air filter	PP honeycomb fabric.			
Refrigerant (Liquid (R410A) piping diameter) (mm (in.))	6.35 (1/4) Brazed	6.35 (1/4) Brazed	6.35 (1/4) Brazed	9.52 (3/8) Brazed
(Gas (R410A) piping diameter) (mm (in.))	12.7 (1/2) Brazed	12.7 (1/2) Brazed	12.7 (1/2) Brazed	15.88 (5/8) Brazed
Field drain pipe size (mm (in.))	O.D.32 (1-1/4)	O.D.32 (1-1/4)	O.D.32 (1-1/4)	O.D.32 (1-1/4)

Model	PEFY-P71VMA(L)-E4	PEFY-P80VMA(L)-E4	PEFY-P100VMA(L)-E4	PEFY-P125VMA(L)-E4	PEFY-P140VMA(L)-E4
Power source	1-phase 220-230-240 V 50/60 Hz				
Cooling capacity (Nominal)	*1 kW: 8.0 *1 BTU/h: 27,300	9.0 30,700	11.2 38,200	14.0 47,800	16.0 54,600
Power input (Nominal)	*2 kW: 0.080 [0.078] *2 (220-230-240 V) A: 0.60 - 0.57 - 0.55	0.080 [0.078] 0.60 - 0.57 - 0.55	0.142 [0.140] 1.01 - 0.97 - 0.93	0.199 [0.197] 1.29 - 1.23 - 1.18	0.208 [0.206] 1.40 - 1.34 - 1.28
Heating capacity (Nominal)	*3 kW: 9.0 *3 BTU/h: 30,700	10.0 34,100	12.5 42,700	16.0 54,600	18.0 61,400
Power input (Nominal)	*2 kW: 0.078 *2 (220-230-240 V) A: 0.60 - 0.57 - 0.55	0.078 0.60 - 0.57 - 0.55	0.140 1.01 - 0.97 - 0.93	0.197 1.29 - 1.23 - 1.18	0.206 1.40 - 1.34 - 1.28
External finish	Galvanized steel plate				
External dimension (mm)	250 x 1,100 x 732	250 x 1,100 x 732	250 x 1,400 x 732	250 x 1,400 x 732	250 x 1,600 x 732
H x W x D (in.)	9-7/8 x 43-5/16 x 28-7/8	9-7/8 x 43-5/16 x 28-7/8	9-7/8 x 55-1/8 x 28-7/8	9-7/8 x 55-1/8 x 28-7/8	9-7/8 x 63 x 28-7/8
Net weight (kg [lbs])	30 (67) [29.5 (67)]	30 (67) [29.5 (67)]	37.5 (84) [37 (82)]	38.5 (86) [38 (84)]	41.5 (93) [41 (91)]
Heat exchanger	Cross fin (Aluminum fin and copper tube)				
FAN	Type x Quantity: Sirocco fan x 2	Sirocco fan x 2	Sirocco fan x 3	Sirocco fan x 3	Sirocco fan x 3
External static press. (*4) (Pa)	40 - <50> - <70> - <100> - <150>	40 - <50> - <70> - <100> - <150>	40 - <50> - <70> - <100> - <150>	<40> - 50 - <70> - <100> - <150>	<40> - 50 - <70> - <100> - <150>
Motor Type	DC motor				
Motor output (kW)	0.121	0.121	0.300	0.300	0.300
Air flow rate (Lo-Mid-Hi) (m³/min)	14.5 - 18.0 - 21.0	14.5 - 18.0 - 21.0	23.0 - 28.0 - 32.0	28.0 - 34.0 - 37.0	29.5 - 35.5 - 40.0
(L/s)	242 - 300 - 350	242 - 300 - 350	383 - 467 - 533	467 - 567 - 617	492 - 592 - 667
(cfm)	512 - 636 - 742	512 - 636 - 742	812 - 989 - 1,130	989 - 1,201 - 1,306	1,042 - 1,254 - 1,412
Sound pressure level (measured in anechoic room) (Lo-Mid-Hi) (*2 *5) (dB <A>)	26.0 - 32.0 - 35.0	26.0 - 32.0 - 35.0	31.0 - 36.0 - 39.0	35.0 - 39.0 - 41.0	34.0 - 38.0 - 41.0
Air filter	PP honeycomb fabric.				
Refrigerant (Liquid (R410A) piping diameter) (mm (in.))	9.52 (3/8) Brazed	9.52 (3/8) Brazed	9.52 (3/8) Brazed	9.52 (3/8) Brazed	9.52 (3/8) Brazed
(Gas (R410A) piping diameter) (mm (in.))	15.88 (5/8) Brazed	15.88 (5/8) Brazed	15.88 (5/8) Brazed	15.88 (5/8) Brazed	15.88 (5/8) Brazed
Field drain pipe size (mm (in.))	O.D.32 (1-1/4)	O.D.32 (1-1/4)	O.D.32 (1-1/4)	O.D.32 (1-1/4)	O.D.32 (1-1/4)

Notes:

- *1 Nominal cooling conditions
Indoor: 27°CDB/19°CWB (81°FDB/66°FWB), Outdoor: 35°CDB (95°FDB)
Pipe length: 7.5 m (24-9/16 ft.), Level difference: 0 m (0 ft.)
- *2 The values are measured at the factory setting of external static pressure.
- *3 Nominal heating conditions
Indoor: 20°CDB (68°FDB), Outdoor: 7°CDB/6°CWB (45°FDB/43°FWB)
Pipe length: 7.5 m (24-9/16 ft.), Level difference: 0 m (0 ft.)
- *4 The factory setting of airflow mode and external static pressure mode is shown without < > . Refer to "Fan characteristics curves", according to the external static pressure, in DATA BOOK for the usable range of air flow rate.
- *5 Measured in anechoic room with a 1 m air inlet duct and 2 m air outlet duct attached to the unit and 1.5 m below the unit.

High static pressure type

PEFY-P VMH(S)-E



Sufficient external static pressure ensuring flexible duct design

Sufficient external static pressure enables designs with long ducts and greatly expands design possibilities. Ducted air-conditioning that matches an interior design can be realized.

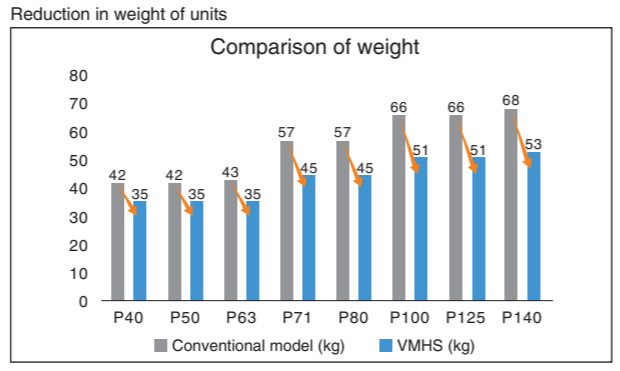
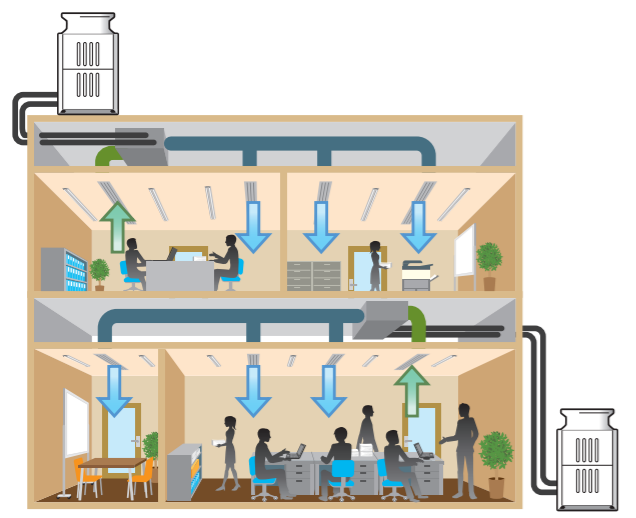
PEFY-P VMHS	P40	P50	P63	P71	P80	P100	P125	P140
External static pressure (Pa)	50 - <100> - <150> - <200>							
PEFY-P VMHS-E	P200		P250					
External static pressure (Pa)	<50> - <100> - 150 - <200> - <250>*							

* The rated external static pressure is shown without <>. The factory setting is the rated value.

PEFY-P VMH-E	P200	P250
External static pressure (Pa)	380 V	<110> - 220
	400/415 V	<130> - 260

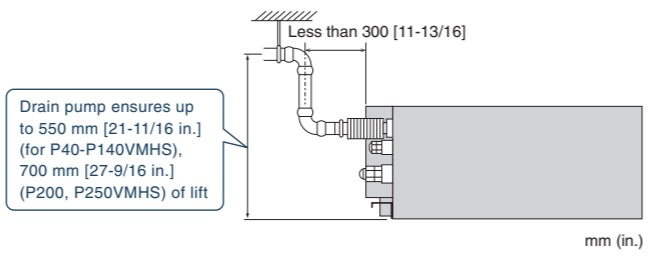
Low Power Consumption and Weight by DC motor (VMHS)

P40 to P140VMHS Models use DC motors. This reduces the power consumption and weight of the units.



Drain pump (option) ensures up to 550 mm [21-11/16 in.] for P40-P140VMHS, P200/P250VMH model / 700 mm [27-9/16 in.] for P200/P250VMHS models

The introduction of an upper drain pump allows the drain connection to be raised as high as 550 mm [21-11/16 in.] for P40-P140VMHS, P200/P250VMH models/700 mm [27-9/16 in.] for P200, 500VMHS models, allowing more freedom in piping layout design and reducing horizontal piping requirements.



Optional Parts

Description	Model	Applicable capacity		Remarks
		VMH-E	VMHS-E	
Drain pump	PAC-KE04DM-F	P200, P250	-	
	PAC-KE05DM-F	-	P200, P250	
	PAC-DRP10DP-E2	-	P40-P140	
Long life filter	PAC-KE86LAF	-	P40, P50, P63	
	PAC-KE88LAF	-	P71, P80	
	PAC-KE89LAF	-	P100, P125, P140	
	PAC-KE85LAF	P200, P250	P200, P250	
	PAC-KE63TB-F	-	P40, P50, P63	
Filter box	PAC-KE99TB-F	-	P71, P80	Required when long life filter is used
	PAC-KE140TB-F	-	P100, P125, P140	
	PAC-KE250TB-F	P200, P250	P200, P250	

Specifications

Model	PEFY-P40VMHS-E	PEFY-P50VMHS-E	PEFY-P63VMHS-E	PEFY-P71VMHS-E	PEFY-P80VMHS-E	PEFY-P100VMHS-E	PEFY-P125VMHS-E	PEFY-P140VMHS-E	
Power source	1-phase 220-230-240 V 50/60 Hz								
Cooling capacity	*1 kW	4.5	5.6	7.1	8.0	9.0	11.2	14.0	16.0
	*1 BTU/h	15,400	19,100	24,200	27,300	30,700	38,200	47,800	54,600
*2 Power input (220-230-240 V)	kW	0.055		0.090	0.075	0.090	0.160		0.190
	A	0.41-0.39-0.38		0.64-0.62-0.59	0.54-0.52-0.50	0.63-0.61-0.58	1.05-1.01-0.96		1.24-1.19-1.14
Heating capacity	*3 kW	5.0	6.3	8.0	9.0	10.0	12.5	16.0	18.0
	*3 BTU/h	17,100	21,500	27,300	30,700	34,100	42,700	54,600	61,400
*2 Power input (220-230-240 V)	kW	0.055		0.090	0.075	0.090	0.160		0.190
	A	0.41-0.39-0.38		0.64-0.62-0.59	0.54-0.52-0.50	0.63-0.61-0.58	1.05-1.01-0.96		1.24-1.19-1.14
External finish	Galvanized steel plate								
External dimension H x W x D	mm	380 x 745 x 900			380 x 1,030 x 900		380 x 1,195 x 900		
	in.	15 x 29-3/8 x 35-7/16			15 x 40-9/16 x 35-7/16		15 x 47-1/16 x 35-7/16		
Net weight	kg (lbs.)	35 (78)		45 (100)		51 (113)		53 (117)	
Heat exchanger	Cross fin (Aluminum fin and copper tube)								
Fan	Type x Quantity	Sirocco fan x 1				Sirocco fan x 2			
	*4 External static press.	Pa	50-<100>-<150>-<200>						
	mmH ₂ O	5.1-<10.2>-<15.3>-<20.4>							
Motor Type	DC motor								
Motor output	kW	0.121		0.244		0.375			
Air flow rate	(Low-Mid-High)								
	m ³ /min	10.0-12.0-14.0		13.5-16.0-19.0		15.5-18.0-22.0		18.0-21.5-25.0	
	L/s	167-200-233		225-267-317		258-300-367		300-358-417	
	cfm	353-424-494		477-565-671		547-636-777		636-759-883	
Sound pressure level (measured in anechoic room)	(Low-Mid-High)								
*2 dB <A>	20-23-27		24-27-32		24-26-30		25-27-30		27-31-34
									27-32-36
Air filter	Option: Synthetic fiber unwoven cloth filter (long life filter) and filter box are recommended.								
Refrigerant piping diameter	Gas (R410A)	mm (in.) 12.7 (1/2) Braze		15.88 (5/8) Braze					
	Liquid (R410A)	mm (in.) 6.35 (1/4) Braze		9.52 (3/8) Braze					
Field drain pipe diameter	mm (in.) O.D.32 (1-1/4)								

Model	PEFY-P200VMHS-E	PEFY-P250VMHS-E	
Power source	1-phase 220-240V 50Hz/1-phase 220-240V 60Hz		
Cooling capacity	*5 kW	22.4	28.0
	*5 BTU/h	76,400	95,500
Heating capacity	*5 kW	25.0	31.5
	*5 BTU/h	85,300	107,500
Power consumption	Cooling kW	0.63 *2	0.82 *2
	Heating kW	0.63 *2	0.82 *2
Current	Cooling 380-415V	A	-
	220-230-240V	A	3.47-3.32-3.18 *2
	Heating 380-415V	A	-
	220-230-240V	A	3.47-3.32-3.18 *2
External finish	Galvanized steel plate		
Dimension H x W x D	mm	470 x 1,250 x 1,120	
	in.	18-9/16 x 49-1/4 x 44-1/8	
Net weight	kg (lbs.)	97 (214)	100 (221)
Heat exchanger	Cross fin (Aluminum plate fin and copper tube)		
Fan	Type x Quantity	Sirocco fan x 2	
	Airflow rate	m ³ /min	-
L/s		-	
cfm		-	
Lo-Mid-Hi		m ³ /min	50.0-61.0-72.0
	L/s	833-1017-1200	967-1183-1400
	cfm	1766-2154-2542	2048-2507-2966
External static pressure	380V Pa	-	
	400, 415V Pa	-	
	Pa	<50>-<100>-<150>-<200>-<250> *9	
	mmH ₂ O	<5.1>-<10.2>-<15.3>-<20.4>-<25.5> *9	
Motor	Type	DC motor	
	Output kW	0.87	
Air filter (option)	Synthetic fiber unwoven cloth filter (long life filter) and filter box are recommended.		
Refrigerant piping diameter	Gas (Brazing)	mm (in.) ø19.05 (ø3/4)	ø22.2 (ø7/8)
	Liquid (Brazing)	ø9.52 (ø3/8)	
Field drain pipe diameter	mm (in.) O.D. 32 (1-1/4)		
Sound pressure level	380V dB (A)	-	
	400, 415V dB (A)	-	
	Lo-Mid-Hi dB (A)	36-39-43 *10	39-42-46 *10

Notes:

*1 Nominal cooling conditions
Indoor: 27°C(81°F)/19°C(66°F)WB, Outdoor: 35°C(95°F)DB
Pipe length: 7.5 m (24-9/16 ft.), Level difference: 0 m (0 ft.)

*2 The values are measured at the factory setting of external static pressure.

*3 Nominal heating conditions
Indoor: 20°C(68°F)DB, Outdoor: 7°C(45°F)DB/6°C(43°F)WB
Pipe length: 7.5 m (24-9/16 ft.), Level difference: 0 m (0 ft.)

*4 The factory setting of external static pressure is shown without <>.
Refer to "Fan characteristics curves", according to the external static pressure, in DATA BOOK for the usable range of air flow rate.

*5 Cooling/heating capacity indicates the maximum value at operation under the following condition.
Cooling Indoor: 27°C(81°F)DB/19°C(66°F)WB, Outdoor: 35°C(95°F)DB
Heating Indoor: 20°C(68°F)DB, Outdoor: 7°C(45°F)DB/6°C(43°F)WB

*6 The external static pressure is set to 220Pa (at 380V) /260Pa (at 400, 415V) at factory shipment.

*7 The value are that at 415V.

*8 It is measured in anechoic room.

*9 The rated external static pressure is shown without <>. The factory setting is the rated value.

*10 It is measured at the rated external static pressure in anechoic room.