The Fujitsu logo, consisting of the word "FUJITSU" in a red, sans-serif font with a red infinity symbol above the letter "I".

FUJITSU

The word "AIRSTAGE" in a white, sans-serif font, positioned on a dark teal background.

AIRSTAGE

A background image featuring a blurred green tree against a bright sky, with a large, curved, reflective water droplet in the foreground that mirrors the scene.

NEW PRODUCT CATALOGUE 2023
AIR CONDITIONERS

The FUJITSU GENERAL Way

Our mission

Living together for our future

Through innovation and technology, we deliver a brighter future with peace of mind to our customers and societies around the world.

Our philosophy

Act spontaneously

We embrace new challenges by investing in ourselves for personal growth, and through continuous creativity with a spontaneous attitude.

Develop our team

We respect and value our people, and optimize their abilities through fostering culture and diversity, and utilizing a collaborative effort focused on communication.

Value integrity

To achieve our goals, we always act with integrity and shared ethics.



CONTENTS

04 About AIRSTAGE

06 OUR MESSAGE

08 Sustainable

10 Cleanliness

12 Future

14 Control

16 Design

18 History

20 Worldwide locations

22 Global business activities

24 Project references

26 Global development & Production bases

28 High-quality development & Production facilities

2023 New Products

PRODUCT CATEGORY

30 SPLIT

36 MULTI-SPLIT

44 CONTROL SYSTEM & OPTIONAL PARTS

We continue to change to sustain a cleaner world.

AIRSTAGE

Air conditioners are now an essential lifeline to 'life'.

Guidelines aimed at achieving a comfortable, healthy, safe, and secure society through manufacturing that is friendly to people and the earth.





OUR MESSAGE





for Sustainable

AIRSTAGE



for Cleanliness



for Future



for Control



for Design

We create comfortable lives for people around the world with "made-in-Japan quality" and innovative manufacturing.



History



Worldwide locations



Global business activities



Project references



Global development & Production bases



High-quality development & Production facilities



Sustainable

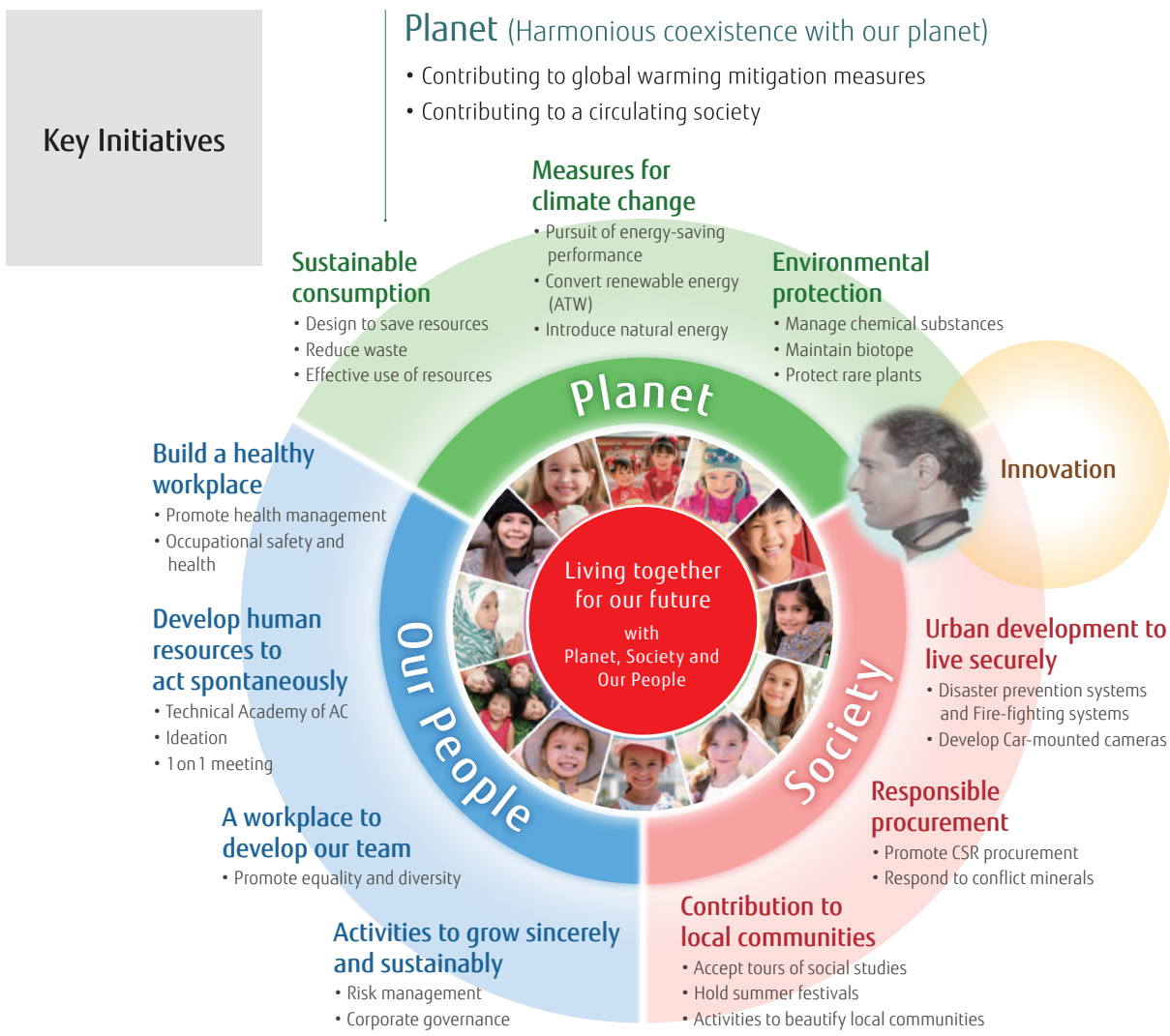
Sustainable management

We see the challenge of expanding our business by contributing to the realization of a sustainable society as a core element of our growth strategy, and we are working on "sustainable management," based on the three pillars of "harmonious coexistence with our planet," "social contribution," and "care for employees."



Basic policy on sustainable management

The sustainable development goals (SDGs) of the UN will drive business creation in the coming years. The key principle of the SDGs, "Leave no one behind," is synonymous with our own corporate philosophy of "Living together for our future." The promotion of sustainable management is carried out from a medium- to long-term perspective, with a promise to shape a sustainable society for the children and society of the future. We will pursue business growth by accelerating this transformation.



Our People (Care for employees)

- Strategic implementation of health and productivity management
- Creating flexible work styles under COVID-19
- Enhancing human resource development

Society (Social contribution)

Fostering innovation to address social issues (Providing a healthy, clean, and safe society and environment)



Cleanliness

Think about air quality

Fresh air is essential for comfortable air conditioning. Fujitsu General offers a wide range of air conditioning products with air purification functions, such as ventilation systems equipped with high-performance filters and heat exchangers.

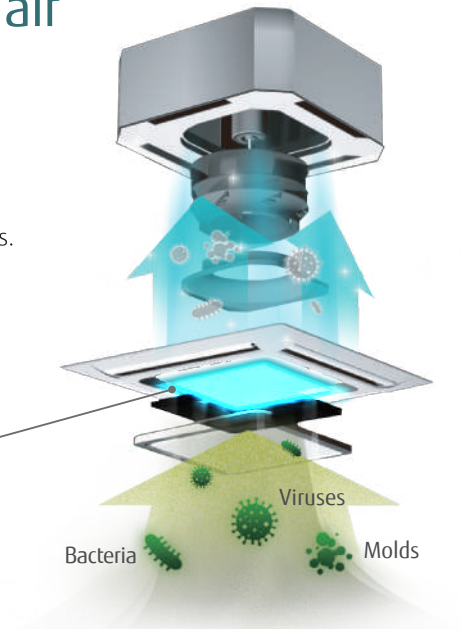
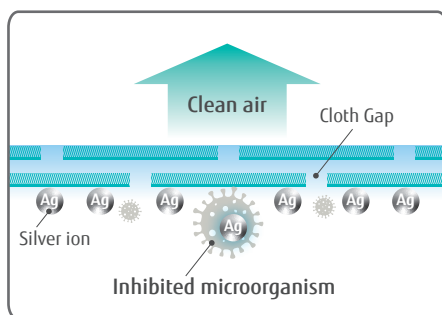


Collecting dust particles to clean the air



Silver Ion Filter

The Silver ion filter helps to keep indoor air free from viruses, bacteria and molds. Notice: Not a result of experiments in an actual use environment. Silver ion filter inhibits activity or growth of microorganism, but do not prevent infection.

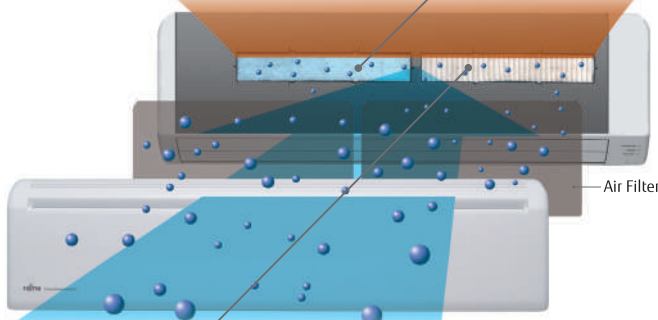
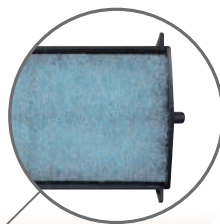


Different filters are used on each side



Apple-catechin Filter

The Apple-catechin filter uses static electricity to clean fine particles and dust in the air.



Ion Deodorization Filter

The filter deodorizes by powerfully decomposing absorbed odors using the oxidizing and reducing effects of ions generated by the ultra-fine-particle ceramic.





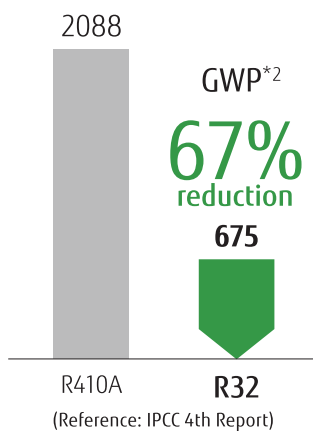
Future

The green refrigerant

Throughout our research and development process, we are constantly striving to create products that we can be proud of in the future. The technologies we have cultivated through these efforts are incorporated into our environmentally friendly products, and are recognized in the Singapore market, which has extremely strict environmental regulations.

R32 refrigerant with reduced global warming potential

- **Zero** Ozone Depletion Potential (ODP^{*1})
- High environmental properties
- High performance
- Economically efficient



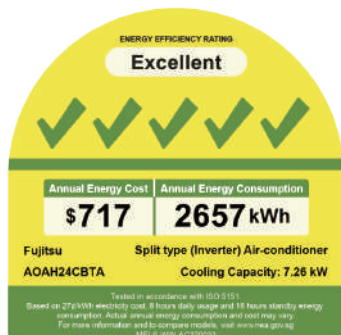
^{*1} ODP (Ozone Depleting Potential): a relative value that indicates the impact per unit weight of ozone-depleting substances released into the atmosphere when CFC-11 (trichlorofluoromethane, CCl3F) is fixed at 1.0

^{*2} GWP (Global Warming Potential): a measurement that indicates how much other greenhouse gases are capable of warming the Earth based on carbon dioxide. This is the integrated value of radiant energy given to the Earth (i.e., the estimated impact on global warming) expressed as a ratio to CO₂.



Our pioneering efforts to create a green future

Our air conditioners have reached the "5 ticks" ranking, the highest energy efficiency level that is now shown on energy labels in Singapore.



Energy Efficiency Rating	Single-split (inverter) ^{*4}	Multi-split (inverter) ^{*4}
COP (W/W) and Standby Power ^{*3} (W) ✓✓✓✓✓ 5 ticks: Excellent	• COP _{100%} ^{*5} • Weighted COP ^{*6} Weighted COP ≥ 5.50, COP _{100%} ≥ 4.86 and Standby power ≤ 4	• COP _{100%} ^{*5} • Weighted COP ^{*6} Weighted COP ≥ 5.50, COP _{100%} ≥ 4.86 and Standby power ≤ 7 × N ^{*7}
✓✓✓✓✓ 4 ticks: Very Good	Weighted COP ≥ 4.86, COP _{100%} ≥ 4.29 and Standby power ≤ 18	Weighted COP ≥ 4.86, COP _{100%} ≥ 4.29 and Standby power ≤ 9 × N ^{*7}
✓✓✓✓ 3 ticks: Good	Weighted COP ≥ 4.29, COP _{100%} ≥ 3.78 and Standby power ≤ 18	Weighted COP ≥ 4.29, COP _{100%} ≥ 3.78 and Standby power ≤ 9 × N ^{*7}
✓✓✓ 2 ticks: Fair	Weighted COP ≥ 4.04 and COP _{100%} ≥ 3.34	Weighted COP ≥ 4.04 and COP _{100%} ≥ 3.34
✓✓ 1 ticks: Low	N/A	N/A

^{*3}: Standby power is expressed in Watt. ^{*4}: For split (inverter) type air-conditioners, the model shall meet both the minimum COP_{100%} and weighted COP. ^{*5}: COP_{100%} is defined as the ratio of total cooling capacity to effective power input at full load cooling capacity. ^{*6}: Weighted COP = 0.4 × COP_{100%} + 0.6 × COP_{50%}. ^{*7}: N is the number of indoor and outdoor units.



Control

Operation from anywhere

Using the Internet of Things (IoT), Fujitsu General is actively providing services that allow users to control their air conditioners from their smartphones. We are also expanding our open co-creation activities with external partners to deepen the development of new functions and services using IoT and artificial intelligence (AI) to develop safe and convenient air conditioners.



User-friendly screen display enables easy operation.

With the WLAN adapter and the FGLair app, you can control the heating and cooling of your home anytime, anywhere.

Fujitsu General provides online control

(Adopting Wireless LAN Interface)

By using our Wireless LAN Interface and FGLair app, you can control your home's cooling and heating anytime and anywhere.



Wireless LAN Interface
The exclusive Wi-Fi adaptor enables to operate the air conditioner by smartphone or tablet PC from outside.

+

Download Free





User friendly app
User friendly screen display facilitates easy operation.



- ON / OFF
- Special state
- Temperature setting
- Setting
- Timer
- Operation setting, Economy setting, Maintenance setting
- Error notification

Various easy-to-use controllers

Fujitsu General is using ergonomics to expand the use of easy-to-use designs such as easy-to-read large LCD panels, easy-to-operate buttons, and displays with easily recognizable icons.

Residential use



The individual controllers match the user operational environments, and the home controller makes batch energy saving management easy. Ease of use was pursued using simple operation buttons, a large LCD screen, and other features.

Simple individual control





Design

Create a beautiful space

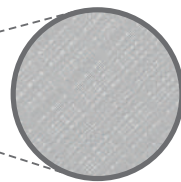
Fujitsu General offers a wide range of products including models with unique textural designs, award-winning models that integrate with room interiors, and Cassette type models with different designs that match office spaces.



Wall-mounted type

Designer Series

The exterior design harmonizes beautifully with any decor and adds comfortable elegance to the room. The light, elegant and three-dimensional expression achieved by the curved surface looks beautiful from any angle.



CMF: Color Material Finish

The texture of the front panel expresses the craftsmanship of Europe, and changes its expression with the changing light of the day.

Different cassette type designs



Compatible with grid ceiling systems
Compact cassette Series
for grid ceiling



Beautiful design from any angle
Cassette type Circular flow Series
White panel





History

Yaou Shoten Ltd. established in 1936

Overseas air conditioning business since 1971

Starts air conditioning business in Japan in 1960

1971 Air conditioner exports to the Middle East.

1977 "Super Power, Super Quiet" Series released

1982 Window type 3 Super Series released

AL/AX Series



1985 Large wall-mounted type and multi-split air conditioner released.



***1,*2 1991** World's first air conditioner equipped with lambda heat exchanger

1994 World's first air conditioner with power diffuser

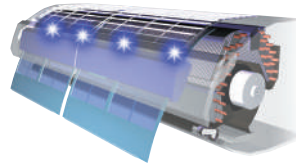
2001 AIRSTAGE Series released VRF air conditioners for large buildings

AIRSTAGE



***3 2002** Air conditioner with the world's first automatic self-cleaning filter system

nocria



2004 Standalone Compact VRF AIRSTAGE J Series released



2006 VRF Heat Pump type Maximum 42 HP AIRSTAGE V Series released

AIRSTAGE V



2009 VRF Heat Pump Modular type Maximum 48 HP AIRSTAGE V-II Series released

2009 Air to water system released

WATERSTAGE



1950 ~

1970 ~

2000 ~

Manufacturing Company Establishment

1955 Head Office established in Kawasaki

1964 Electronic components factory in Ichinoseki



1977 Air conditioner manufacturing company in Hamamatsu (now Hamamatsu business office)

1991 Air conditioner manufacturing company in Thailand

1994 Air conditioner manufacturing company in Shanghai, China

1998 Air conditioner motor manufacturing company in Thailand

2006 VRF air conditioner manufacturing, sale, and service company in China

2007 Air Conditioner Technology Building becomes operational on the premises of the Kawasaki Headquarters. Air conditioner R&D Center in Kawasaki

2009 Compressor Factory begins operation in Thailand



Fujitsu General (UK) Co., Ltd. (UK)



Fujitsu General (EURO) GmbH

Sales & service maintenance company established

1976 North America sales company

1977 Europe sales company (UK)

1978 Australia sales company and Europe sales company (Germany)

1980 Brazil sales company

1997 Asia sales company (Singapore)

1998 Middle East sales company (UAE) and New Zealand sales company

2000 Air conditioner manufacturing and sale technical partnership in India

2002 Taiwan sales company

2006 China sales company

*1: Announced 1991. In room air conditioner for the home (Our company's investigation) *2: Announced 1994. In the category of room air conditioners for the home (Our company's investigation).
*3: Announced 2002. In the category of room air conditioners for the home (Our company's investigation).

For Light commercial use

2011 High energy-saving type AIRSTAGE J-II Series released

2014 Compact & lightweight outdoor unit AIRSTAGE J-IIS equipped with a single fan for improved ease of installation

2016 Compact VRF AIRSTAGE J-III Series with advanced energy efficiency and easy installation released

2017-19 Compact VRF AIRSTAGE J-IIIIL Series for light commercial use released

2020 Compact & lightweight outdoor unit AIRSTAGE J-IVL, J-IV, J-IVS Series released



2019
New cassette style released
3D Flow Cassette

For Commercial use

2012 Heat Recovery Modular type AIRSTAGE VR-II Series Maximum 48 HP released



2020
AIRSTAGE Air handling unit released

2014-15 Heat Pump Modular type AIRSTAGE V-III Series Maximum 54 HP for large buildings released

2020 Heat Recovery type AIRSTAGE VR-IV Series Maximum 48 HP released

For Residential use

2011 Hi-spec Design model LT Series & LU Series released

2017 Flagship Wall-mounted type "nocria X" released

2017-19 Added to this lineup recently are the environment-friendly R32 refrigerant models. (Split & Multi-split type)



AIRSTAGE

"Experience beyond expectations"

Introducing AIRSTAGE, a unified global product brand representing lightness, freedom, and airness, ...the Fujitsu General air conditioning experience.

For Residential use

Split
New products released with Wall-mounted and Cassette



Multi-split
New products released with 3-unit, 4-unit Multi-split



2010 ~

2012 Joint venture in Thailand to manufacture compressors



2016 Commercial use air conditioner R&D Center in Thailand



2019 New building constructed at Kawasaki Head Office to strengthen development capabilities:

Base for creating new value by combining internal and external knowledge



2020 Building IoT-based manufacturing

Implementing a real-time IoT system to instantly visualize and analyze various information



2016 THE AIRSTAGE on Broadway in New York



Fujitsu General (Thailand) Co., Ltd. (Thailand) Factory-2

2023 What's New

*4: Announced 2018. In room air conditioner for the home (Our company's investigation) *5: Announced 2012. In room air conditioner for the home (Our company's investigation)



Worldwide locations

Under a system of five bases in Europe, the Middle East, Asia and Oceania, North and South America, and Japan, the company promotes Globalization from a worldwide perspective while emphasizing the actual conditions in each region.



JAPAN Head Office



Technology research building (Japan)

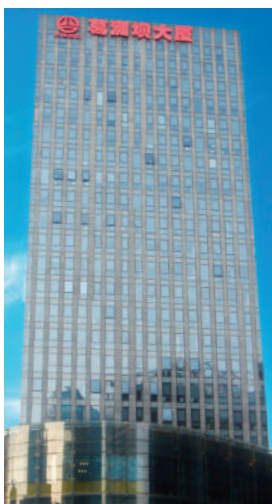


• Air conditioner solution center
"THE AIRSTAGE" in Manhattan, New York

• Fujitsu General America, Inc.

• Fujitsu General Do Brasil Ltda.

15 Overseas Sales Companies



Fujitsu General Sales & Trading (Shanghai) Co., Ltd.



Fujitsu General (Taiwan) Co., Ltd. (Taiwan)



Fujitsu General (Thailand) Co., Ltd. Bangkok Office (Thailand)



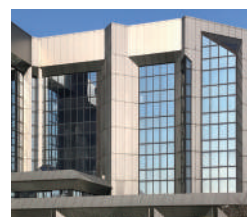
Fujitsu General (Asia) Pte. Ltd. (Singapore)



Fujitsu General (EURO) GmbH (Germany)



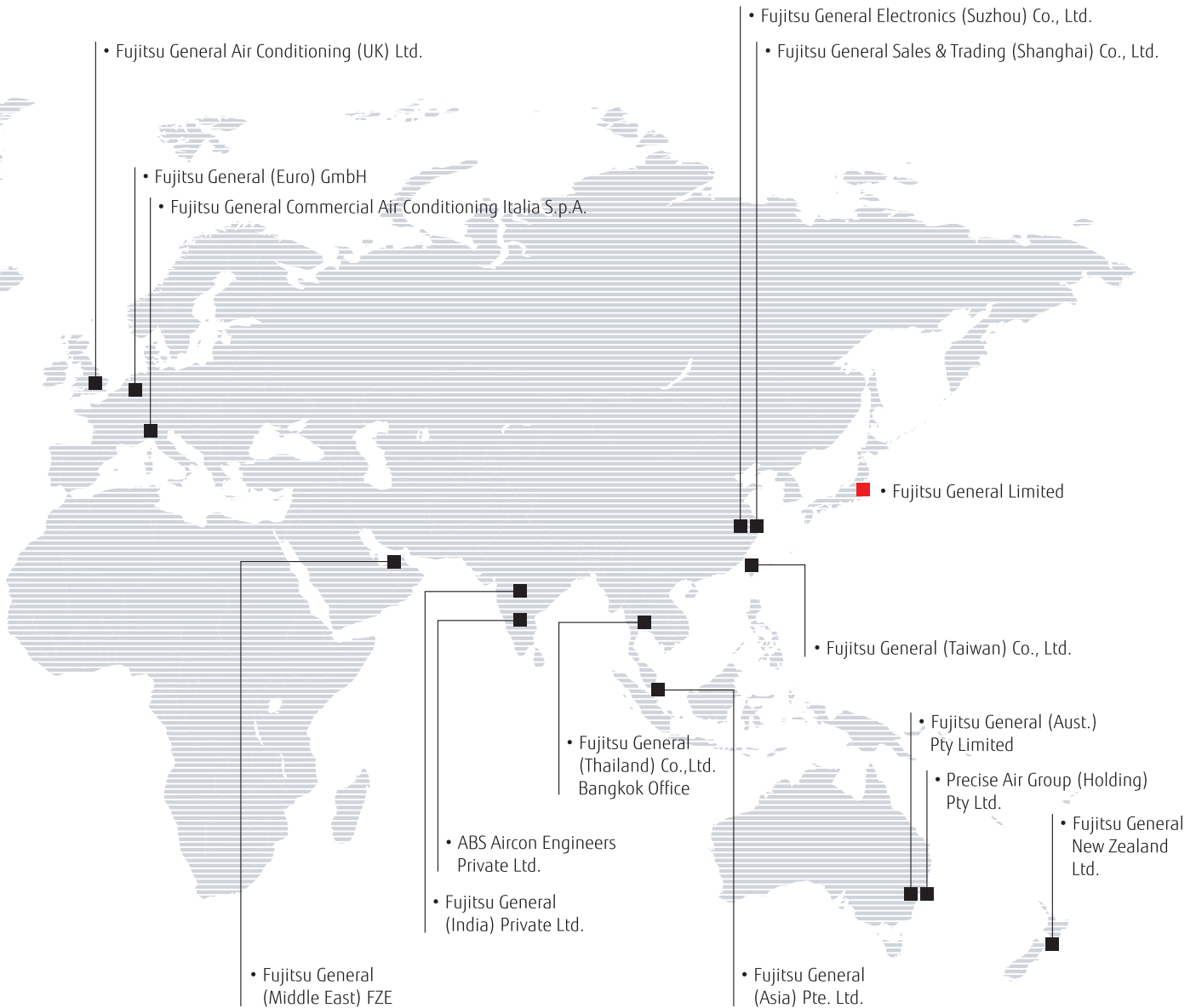
Fujitsu General Air Conditioning (UK) Ltd. (U.K.)



Fujitsu General Commercial Air Conditioning Italia S.p.A. (Italy)



Fujitsu General (India) Private Ltd. (India)



Fujitsu General (Aust.) Pty Ltd. (Australia)



Precise Air Group (Holding) Pty Ltd. (Australia)



Fujitsu General New Zealand Ltd. (New Zealand)



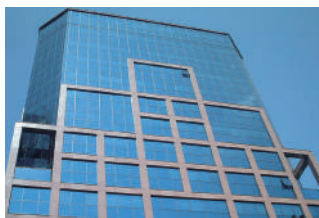
Fujitsu General (Middle East) FZE (U.A.E.)



FUJITSU GENERAL SOLUTION CENTER "THE AIRSTAGE" (U.S.A.)



ABS Aircon Engineers Private Ltd. (India)



Fujitsu General Do Brasil Ltda. (Brazil)



Fujitsu General America, Inc. (U.S.A.)



Global business activities



We have been recognized for our activities in advertising, human resource development and customer service, as well as for our community-based social contribution activities in each region, winning numerous awards and achieving a high level of customer satisfaction.

North and South Americas



HVAC trade shows in Brazil



Distributor conference in USA



Call center

Middle East



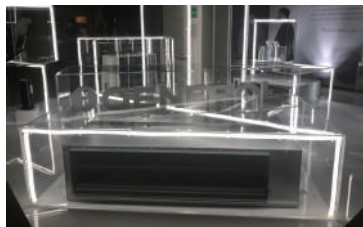
Exhibition



Training in Kuwait



Technical seminar



New product seminar in UAE

Europe



HVAC trade show in Germany



Training in Germany

International authoritative design awards



The NEWS Dealer Design Awards



Gold Award (Category: HVAC & PLUMBING) in Reader's Choice Awards



TOP OF MIND 2016 First prize in "MARCA DE EQUIPAMENTO DE AR-CONDICIONADO" category of "CLIMATIZACAO" division

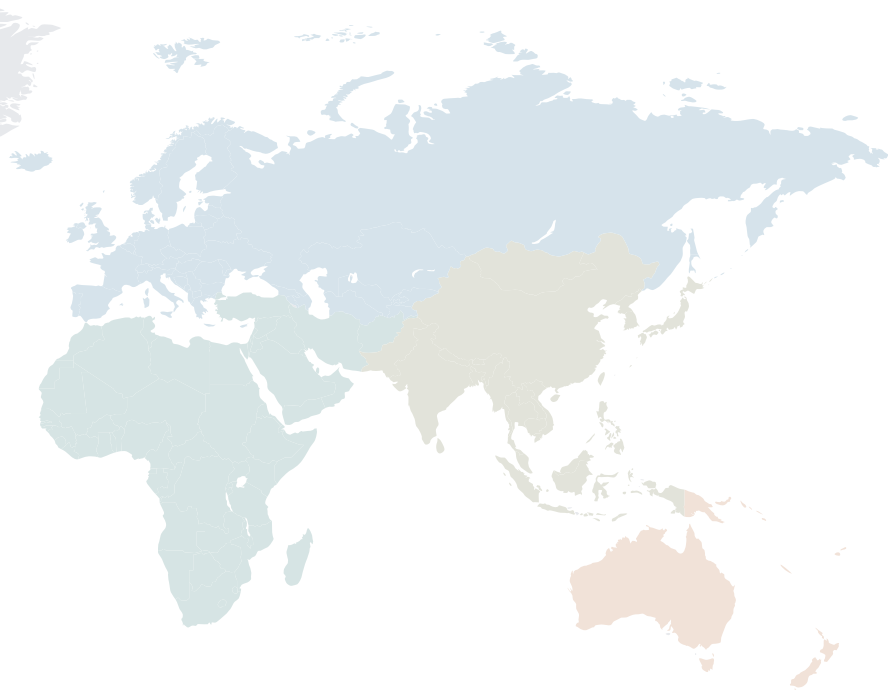


Superbrands is the world's largest independent arbiter of branding.



2012

The iF Product Design Award is given annually by iF International Forum Design GmbH for industrial products from around the world.



Asia



Thanksgiving party in Taiwan



Training in India

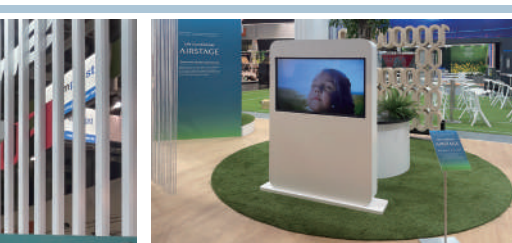


Opening ceremony in India



Service training in Vietnam

Oceania



HVAC trade show in Germany



HVAC trade show in Australia



Training seminar in Italy



Launch event in New Zealand



Event in the United Kingdom



Launch event in New Zealand



The Plus X Award is the world's largest innovation award for technology, sports and lifestyle.



reddot winner 2020

A product design competition that has been held since 1955. Products that win the award are given the "Red Dot" seal, a sign of international recognition of quality.



Voted by Australians as the 'Most Trusted Brand' – Air Conditioning Category 4 Years Running'



China State Construction Engineering Luban Prize



GOOD DESIGN

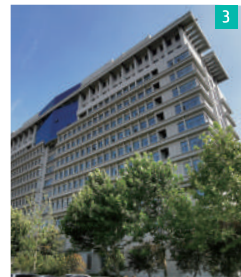
The Good Design Award is an award sponsored by the Japan Institute of Design Promotion, and is given once a year to items of outstanding design.



Project references

Introduced in over 50 countries worldwide

Highly popular for their excellent quality, energy efficiency, and ease of installation, Fujitsu General's products are installed in a wide range of buildings around the world, including high-rise office buildings, stores, hotels, public facilities, schools, hospitals, and residences.



For Light commercial use

- 1 Shop in Europe
- 2 Factory in Europe
- 3 School in Asia
- 4 Hospital in Asia
- 5 Office in Asia
- 6 Shop in Oceania
- 7 Office in Oceania
- 8 School in the Middle East
- 9 Public facility in the United States



11



10



13



12

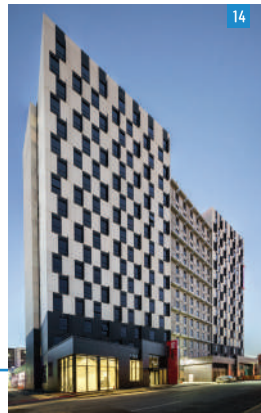


16

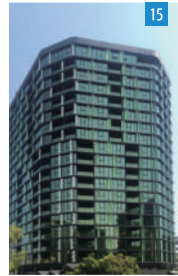


For Commercial use

- 10 Public Square in Asia
- 11 Office in Asia
- 12 Hotel in Asia
- 13 Public facility in Asia
- 14 Apartment in Oceania
- 15 Apartment in Oceania
- 16 Hotel in the Middle East
- 17 Hotel in the Middle East



14



15



17



18



20



For Residential use

- 18 Villa in the Africa
- 19 Residence in Oceania
- 20 Residence in the United States
- 21 Villa in the Middle East



19



21



Global development & Production bases

We have established R&D bases in five countries from Japan, Europe, Asia, China, and North America to pursue environmental properties and comfort according to the needs of each region.

- Head office
- R&D center
- Manufacturing companies

R&D center & Technology Research Building



R&D center in Fujitsu General (EURO) GmbH (Germany)



North America R&D Center (USA)



Fujitsu General Air Conditioning R&D (Thailand) Co., Ltd. (Thailand)



R&D center in Fujitsu General (Shanghai)



JAPAN Head office, R&D center and 60 m height difference testing tower (Japan)



• Fujitsu General (Euro) GmbH
— R&D center

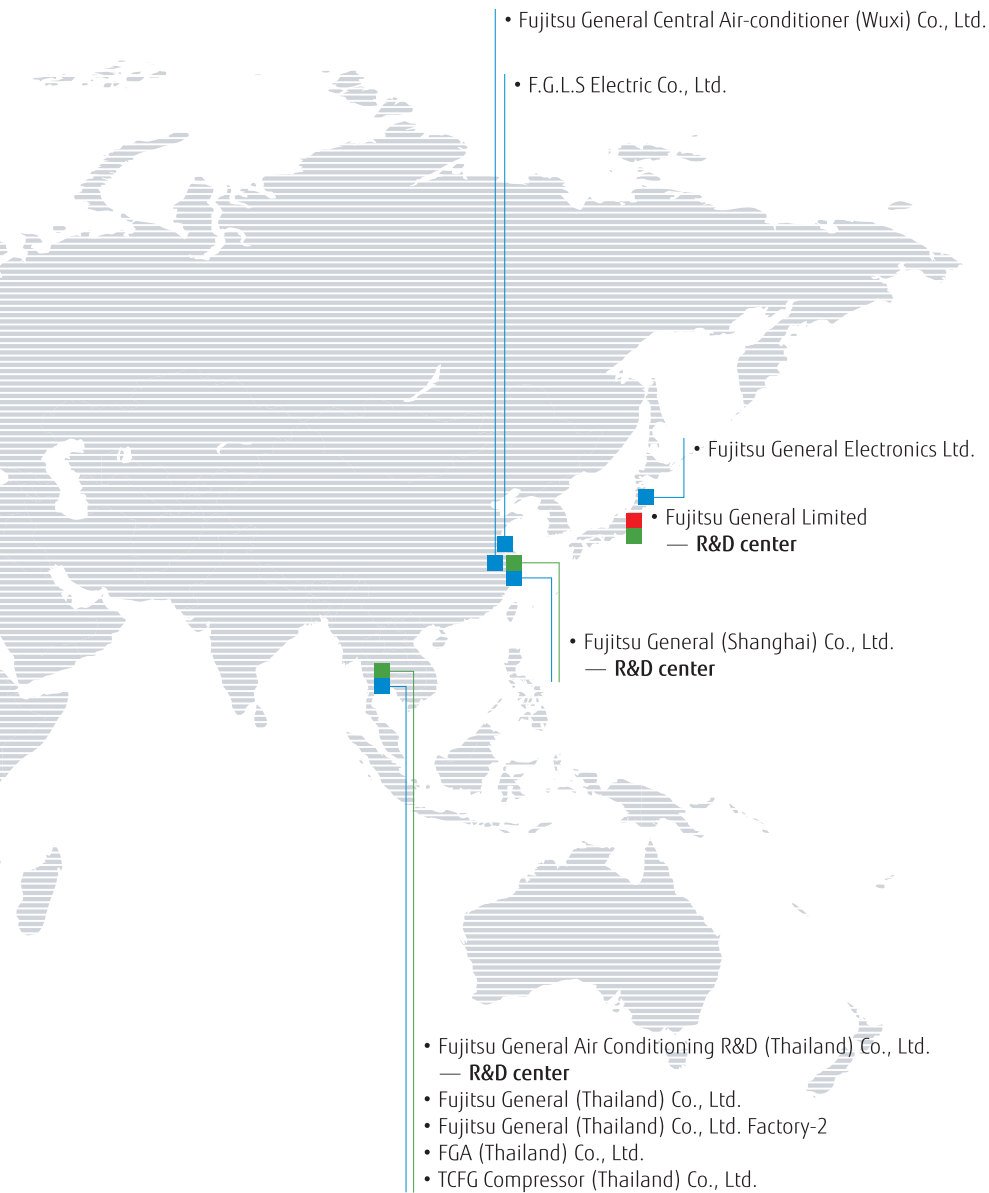
• North America R&D Center
— R&D center

Technology research building in Japan Head office

Constructing IoT-based manufacturing

We are implementing a real-time IoT-enabled system to immediately visualize and analyze various information such as facility operating status, assembly line production progress, and parts inventory and transportation status. This will further enhance the accuracy of production and shipping forecasts in the Head Office and factory management departments. The system will also help improve activities by employees at production sites, with the aim of improving the efficiency of the production process, the efficiency of parts distribution operations, and the utilization rates of the facilities.





Overseas manufacturing companies



Fujitsu General (Shanghai) Co., Ltd. (China)



F.G.L.S. Electric Co., Ltd. (China)



Fujitsu General Central Air-conditioner (Wuxi) Co., Ltd. (China)



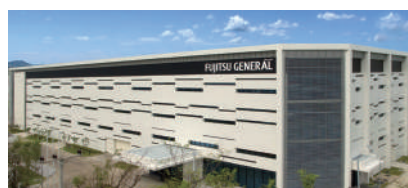
Fujitsu General Electronics Ltd. (Japan)



Fujitsu General (Thailand) Co., Ltd. (Thailand) Factory-2



Fujitsu General (Thailand) Co., Ltd. (Thailand)



Fujitsu General Air Conditioning R&D (Thailand) Co., Ltd. (Thailand)



FGA (Thailand) Co., Ltd. (Thailand)



TCFG Compressor (Thailand) Co., Ltd. (Thailand)



High-quality development & Production facilities

Advanced Research Facilities and Equipment

Performance tests



Airflow measurement room
Measure the airflow of air conditioners, from compact room air conditioner models to variable refrigerant flow (VRF) systems.



Calorimeter
Measure the temperature, humidity, and airflow at the inlet and outlet of the air conditioner to evaluate its cooling and heating capacity.



Silent room
Measure the operating sounds of air conditioners on walls and ceilings with reduced sound reflection.

Fujitsu General is one of Japan's leading manufacturers with R&D centers in Japan. The research and development conducted in these facilities contributes to providing our customers with the highest quality and performance.

Reliability tests



Constant temperature room
Verify product performance in cooling and heating operations under various temperature and humidity conditions.



Practical test room
Check whether the performance of the air conditioner can be sustained under the conditions of the actual housing environment.



Shower test room
Check if the electrical box of the outdoor unit is protected from strong wind and rain, such as during a typhoon.

Transportation and Handling Tests



Compressibility test



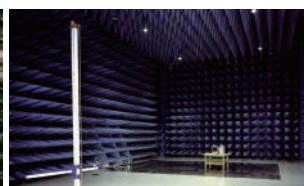
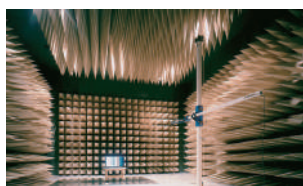
Vibration test



Technology research building in Japan Head office

Testing laboratory

Fujitsu General EMC Laboratory Limited



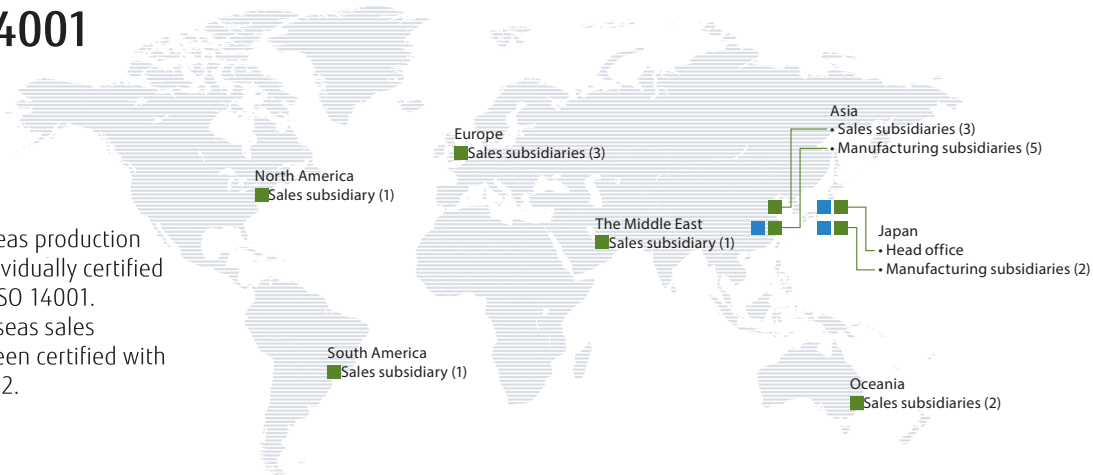
60-m Height Difference testing tower

Tests oil circulation in a compressor for reliability.



Certification of ISO 9001 and ISO 14001

■ ISO 9001
 ■ ISO 14001
 () Number of companies



The Group's 5 overseas production subsidiaries are individually certified with ISO 9001 and ISO 14001. The Group's 11 overseas sales subsidiaries have been certified with ISO 14001 since 2012.

Product Quality Assurance

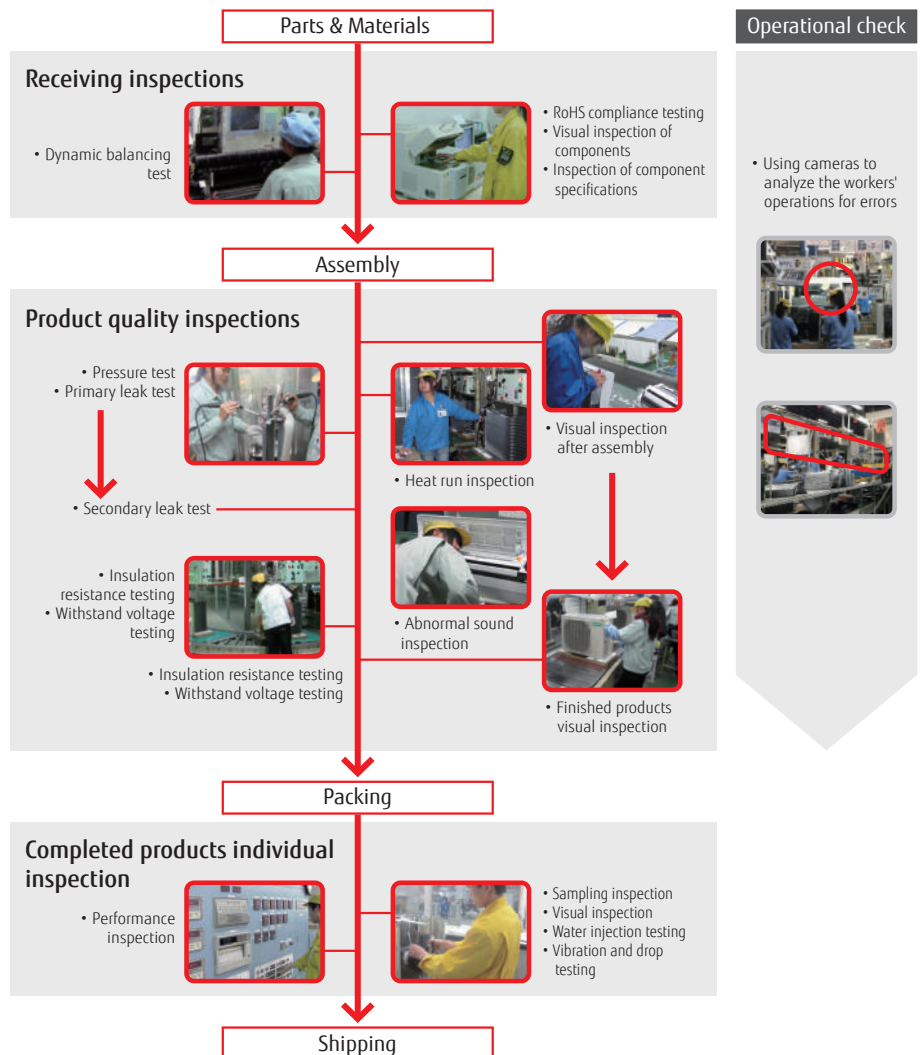
All Fujitsu General plants are ISO 9001 certified and operate under a unified quality control system. We deliver to customers all over the world high-quality products that have passed stringent quality inspections.

Receiving inspection

We require all our parts suppliers to submit test reports to ensure that all parts we receive from them meet our quality standards. Our in-house test department inspects incoming parts to ensure their compliance with RoHS as required by the EU. We also conduct 100% inspection of main parts to prevent defective parts from making it to assembly lines.

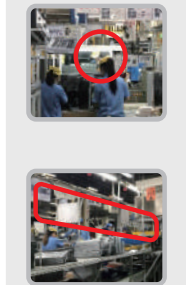
Quality inspection of products

We carry out stringent quality inspections in all production processes performed in our plants. To keep the quality of our products high, inspectors check their quality from start to finish on production lines.



Operational check

• Using cameras to analyze the workers' operations for errors



2023 New Products
PRODUCT CATEGORY
SPLIT





Energy saving design to provide a comfortable indoor environment while being environment-friendly.

An air conditioner that is people-friendly is also environment-friendly. Fujitsu General offers a broad lineup of products from large living rooms to bedrooms and children's rooms. We make your room more comfortable with a wide range of air conditioner types from ceiling wall type with automatic filters and cleaning functions to wall mounted type that improve the air cleaning function. Of course these models feature highly efficient operation that conserves electricity.

NEW

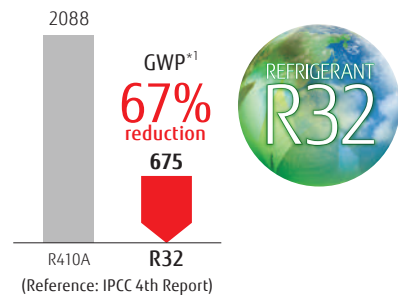
Wall-mounted type



Adopting new R32 refrigerant

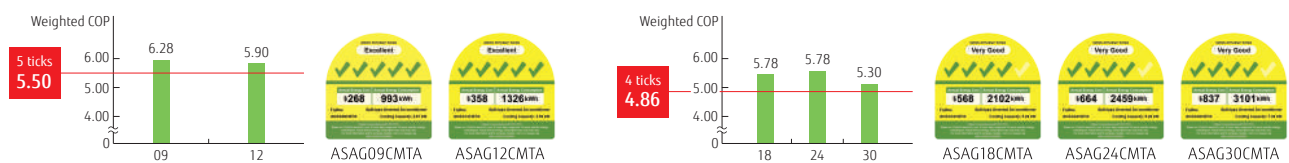
R32 refrigerant is an environmentally friendly refrigerant with a significantly lower Global Warming Potential (GWP) than conventional refrigerant.

*1 GWP (Global Warming Potential): a measurement that indicates how much other greenhouse gases are capable of warming the Earth based on carbon dioxide. This is the integrated value of radiant energy given to the Earth (i.e., the estimated impact on global warming) expressed as a ratio to CO₂.



High energy saving

New models have achieved the top energy efficiency level (5 ticks) by inverter technology.



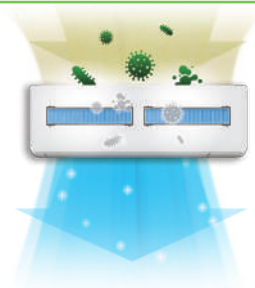
PM2.5 + Anti-virus filter

The filter inhibits the activities of viruses*1, bacteria*2 and molds*3 trapped on the filter.

(only effective when the microorganism is trapped on the filter with dust or droplet)

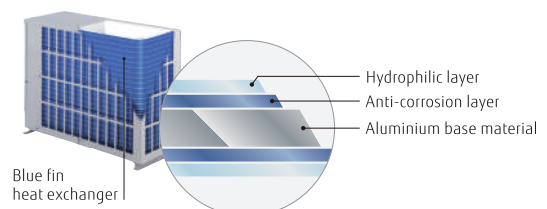
Clean the firmly catch the PM2.5 particles of 0.3~2.5µm.

(PM2.5 is a general term for micro particulate matter less than 2.5µm.)



Blue fin heat exchanger

Blue fin heat-exchanger is used for the outdoor units, which enables to enhance the corrosion-resistance performance.



Model: ASAG09CMTA / ASAG12CMTA / ASAG18CMTA / ASAG24CMTA / ASAG30CMTA



Specifications

Model No.	Indoor unit		ASAG09CMTA	ASAG12CMTA	ASAG18CMTA	ASAG24CMTA	ASAG30CMTA
	Outdoor unit		AOAG09CMTA	AOAG12CMTA	AOAG18CMTA	AOAG24CMTA	AOAG30CMTA
Power Source	V/∅/Hz		230/1/50				
Capacity	Cooling	BTU/h	9,500 (3,070-14,300)	11,900 (3,070-15,500)	17,400 (5,500-23,100)	20,400 (6,000-26,600)	24,200 (9,700-31,500)
		kW	2.79 (0.90-4.19)	3.50 (0.90-4.54)	5.10 (1.61-6.77)	5.99 (1.76-7.79)	7.10 (2.84-9.23)
Input Power	Cooling	kW	0.54	0.72	1.12	1.34	1.65
EER	Cooling	W/W	5.17	4.86	4.55	4.47	4.3
Running Current	Cooling	A	3.0	3.7	5.2	6.1	7.6
Moisture Removal		l/h	0.48	0.77	1.26	0.88	1.37
Sound Pressure (Cooling)	Indoor (H/M/L/Q)	dB(A)	39/35/30/20	43/35/30/20	47/42/36/30	45/39/34/30	49/45/40/32
	Outdoor		46	48	54	54	55
Airflow Rate (Cooling)	Indoor (H/M/L/Q)	m³/h	670/560/430/250	760/560/430/250	1010/850/630/500	1130/900/740/660	1360/1130/960/720
	Outdoor		2,000	2,210	3,040	3,240	4,150
Net Dimensions H x W x D	Indoor / Grille	mm	270 × 834 × 222	270 × 834 × 222	280 × 980 × 240	340 × 1150 × 280	340 × 1150 × 280
		kg(lbs)	10(22)	10(22)	12.5(28)	16(35)	16(35)
Net Weight	Outdoor	mm	632 × 799 × 290	632 × 799 × 290	716 × 820 × 315	716 × 820 × 315	788 × 940 × 320
		kg(lbs)	35(77)	35(77)	41(90)	41(90)	53(117)
Piping Connections (Small / Large)		mm	6.35/9.52	6.35/9.52	6.35/12.70	6.35/12.70	9.52/15.88
Drain Pipe Diameter (I.D./O.D.)			13.8 / 15.8 to 16.7	13.8 / 15.8 to 16.7	13.8 / 15.8 to 16.7	13.8 / 15 to 16.8	13.8 / 15 to 16.8
Max. Pipe Length (Pre-Charge)		m	20 (15)	20 (15)	30 (15)	30 (15)	50 (20)
Max. Height Difference			15	15	25	25	30
Operation Range	Cooling	°CDB	18 to 46	18 to 46	18 to 46	18 to 46	18 to 46
Refrigerant			R32	R32	R32	R32	R32

Note : Specifications are based on the following conditions.
Cooling : Indoor temperature of 27°CDB / 19°CWB, and outdoor temperature of 35°CDB / 24°CWB.

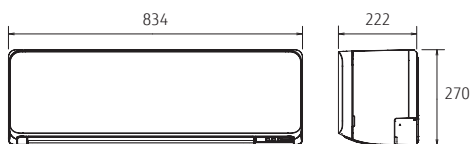
Optional parts

Compact wired remote controller: UTY-RCRYZ1	Simple remote controller: UTY-RSRY, UTY-RHRY	Communication kit: UTY-TWRXZ2
Wired remote controller (touch panel): UTY-RNRYZ5	External input and output PCB: UTY-XCSXZ2	Wireless LAN Interface (USB type): UTY-TFSXF3
Wired remote controller: UTY-RLRY	External connect kit: UTY-XWZXZ5	

Dimensions

(Unit : mm)

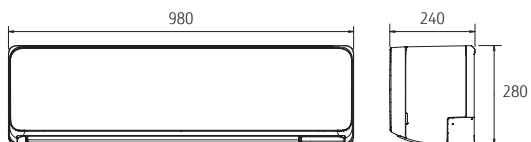
Model: ASAG09/12CMTA



Model: ASAG24/30CMTA



Model: ASAG18CMTA



NEW

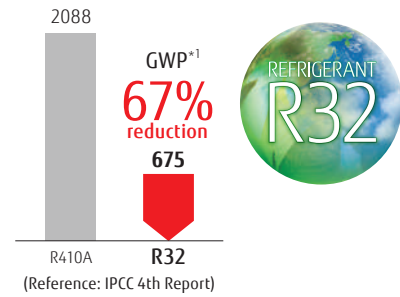
Cassette



Adopting new R32 refrigerant

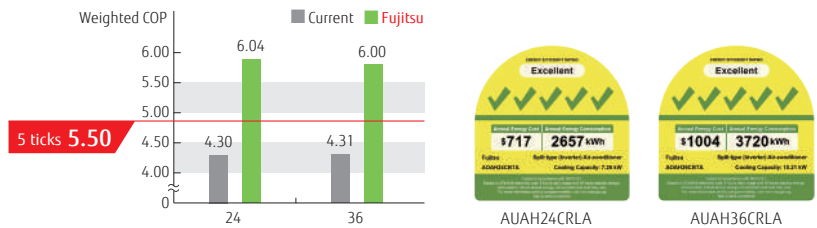
R32 refrigerant is an environmentally friendly refrigerant with a significantly lower Global Warming Potential (GWP) than conventional refrigerant.

*1 GWP (Global Warming Potential): a measurement that indicates how much other greenhouse gases are capable of warming the Earth based on carbon dioxide. This is the integrated value of radiant energy given to the Earth (i.e., the estimated impact on global warming) expressed as a ratio to CO2.



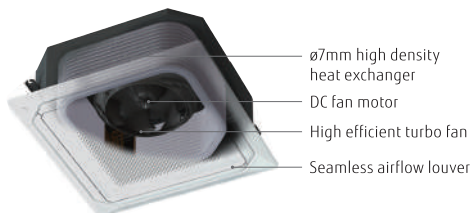
High energy saving

New models have achieved the top energy efficiency level (5 ticks) by inverter technology.



Uniform air distribution by the seamless air opening

In new model, the gaps between each airflow openings are removed, which enables to distribute wider and uniform airflow to room.



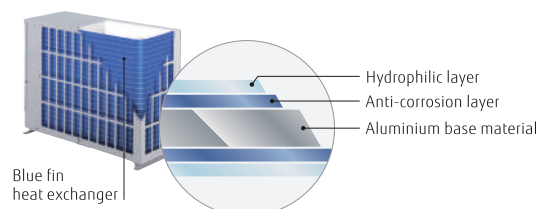
Uniform temperature air conditioning

Achieve a comfortable air conditioning spread to every corner of the room by circular flow & wide vertical airflow.



Blue fin heat exchanger

Blue fin heat-exchanger is used for the outdoor units, which enables to enhance the corrosion-resistance performance.



Model: AUAH24CRLA / AUAH36CRLA



AOAH24CBTA



AOAH36CBTA

Specifications

Model No.	Indoor unit		AUAH24CRLA	AUAH36CRLA
	Outdoor unit		AOAH24CBTA	AOAH36CBTA
Power Source		V/∅/Hz	230 / 1 / 50	
Capacity	Cooling (Min.-Max.)	kW	7.10 (3.34 - 10.65)	10.0 (3.80 - 15.00)
		Btu/h	24,200 (11,400 - 36,300)	34,100 (13,000 - 51,200)
Input Power	Cooling	kW	1.46	2.05
EER	Cooling	W/W	4.86	4.88
COP (Weighted)	Cooling		5.89	5.80
Running Current	Cooling	A	6.6	9.2
Moisture Removal		l/h	1.2	2.4
Sound Pressure (Cooling)	Indoor (H/M/L/Q)	dB(A)	41/38/36/33	46/42/39/36
	Outdoor		53	52
Airflow Rate (Cooling)	Indoor (H/M/L/Q)	m ³ /h	1560/1390/1300/1150	2000/1650/1460/1300
	Outdoor		3,380	6,400
Net Dimensions H x W x D	Indoor / Grille	mm	288 × 840 × 840 / 53 × 950 × 950	288 × 840 × 840 / 53 × 950 × 950
		kg(lbs)	29 (64) / 6 (13)	29 (64) / 6 (13)
Net Weight	Outdoor	mm	788 × 940 × 320	1,418 × 970 × 370
		kg(lbs)	53 (117)	94 (207)
Piping Connections (Small / Large)		mm	9.52 / 15.88	9.52 / 15.88
Drain Pipe Diameter (I.D./O.D.)			∅25 / ∅32	∅25 / ∅32
Max. Pipe Length (Pre-Charge)		m	50 (30)	55 (30)
Max. Height Difference			30	30
Operation Range	Cooling	°CDB	21 to 46	21 to 46
Refrigerant			R32	R32
Cassette Grille			UTG-UKYC-W	UTG-UKYC-W

Note : Specifications are based on the following conditions.

Cooling : Indoor temperature of 27°CDB / 19°CWB, and outdoor temperature of 35°CDB / 24°CWB.

Optional parts

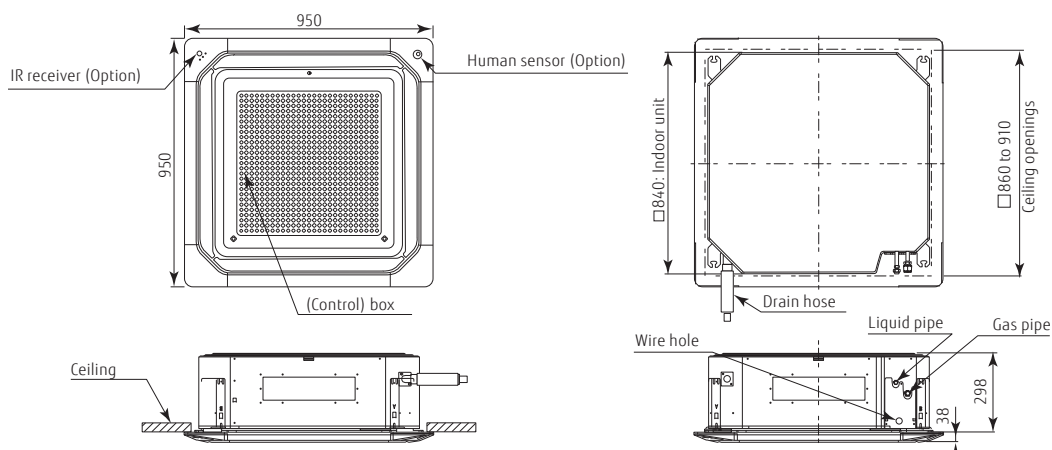
Compact wired remote controller: UTY-RCRYZ1
 Wired remote controller (touch panel): UTY-RNRYZ5
 Wired remote controller: UTY-RLRY
 Simple remote controller: UTY-RSRY
 UTY-RHRY
 Cassette grille: UTG-UKYC-W
 UTG-UKYA-B

Human sensor kit: UTY-SHZXC
 Air outlet shutter plate: UTR-YDZK
 Wide panel: UTG-AKXA-W
 Panel spacer: UTG-BKXA-W
 Insulation kit for high humidity: UTZ-KXRA
 Fresh-air intake kit: UTZ-VXRA
 IR receiver kit: UTY-LBITYC

External input and output PCB: UTY-XCSX
 External input and output PCB box: UTZ-GXRA
 Wireless LAN interface: UTY-TFSXZ2
 Modbus converter: UTY-VMSX
 KNX convertor: UTY-VKSX
 External switch controller: UTY-TERX
 External connect kit: UTY-XWZXZG

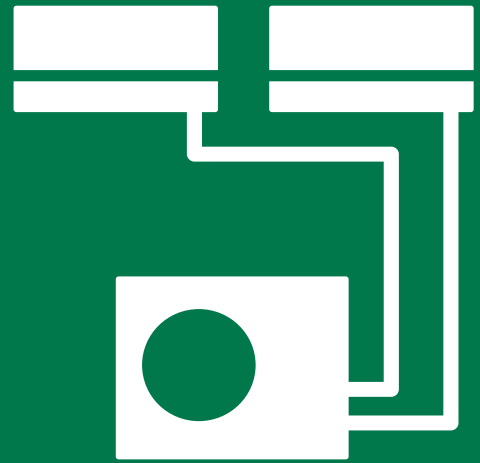
Dimensions

(Unit : mm)



A photograph of a modern bedroom interior. The room features a bed with a white and black patterned duvet and pillows. A black bedside table holds a black lamp. A window offers a view of a city skyline, including a prominent skyscraper. The room has a brick wall on the left and light-colored wood flooring.

2023 New Products
PRODUCT CATEGORY
MULTI-SPLIT



Control several indoor units with one outdoor unit. Build the optimum system you desire.

If you want to keep a large floor as well as many rooms comfortable, we recommend you use Multi-split to build a simple system using one outdoor unit. Choose from a large lineup of indoor units that best matches your rooms. You can mix and match them at will. Build the system that is just right for you.

NEW

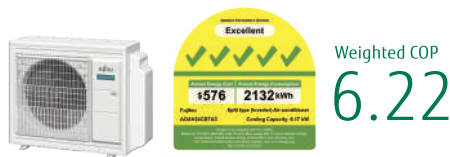
3-unit,
4-unit,
Multi-split



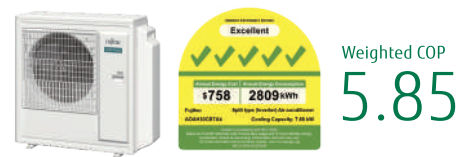
High energy saving

New models have achieved the top energy efficiency level (5 ticks) and low energy consumption.

3 unit Multi: A0AH24CBTA3



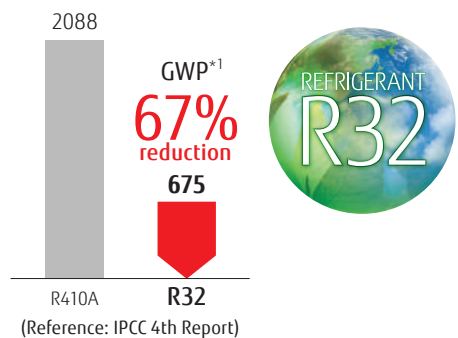
4 unit Multi: A0AH30CBTA4



Adopting new R32 refrigerant

R32 refrigerant is an environmentally friendly refrigerant with a significantly lower Global Warming Potential (GWP) than conventional refrigerant.

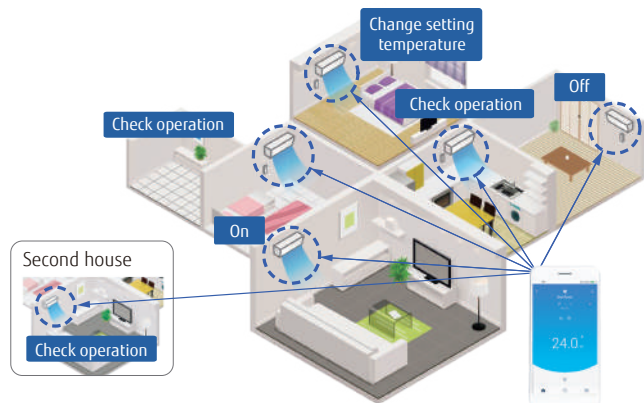
*1 GWP (Global Warming Potential): a measurement that indicates how much other greenhouse gases are capable of warming the Earth based on carbon dioxide. This is the integrated value of radiant energy given to the Earth (i.e., the estimated impact on global warming) expressed as a ratio to CO₂.



Wireless Interface and *FGLair* app,

You can remotely operate your home air conditioner using your smartphone as a remote control. Using a special app, you can check the operating status and change the operation settings. With a single smartphone, you can check the operating status of your home.

FGLair is a worldwide trademark of FUJITSU GENERAL LIMITED.



3-unit: AOA24CBTA3
4-unit: AOA30CBTA4



3-unit

4-unit

Specifications(3-unit, 4-unit)

Model No.			AOAH24CBTA3	AOAH30CBTA4
Power Source		V/Ø/Hz	230/1/50	230/1/50
Rated Capacity (min-max)	Cooling	kW	6.0 (1.8-9.0)	7.5 (2.4-11.0)
Sound pressure level	Cooling	dB(A)	53	53
Net Dimensions H × W × D		mm	716 × 799 × 315	884 × 820 × 315
Net Weight		kg(lbs)	48 (106)	58 (128)
Connection Pipe Diameter	Small (Liquid)	mm	6.35 × 3	
	Large (Gas)		9.52 × 2, 12.7 × 1	
Max. Pipe Length		Total / Each	50 / 25	
Max. Height Difference	Between Outdoor Unit and Each Indoor Units.	m	15	
	Between Indoor Units.		10	
Operation Range	Cooling	°CDB	10 to 46	
	Type		R32	
Refrigerant	Charge		kg	1.8
			kg	2.5

Note : Specifications are based on the following conditions.

Cooling : Indoor temperature of 27°CDB / 19°CWB, and outdoor temperature of 35°CDB / 24°CWB.

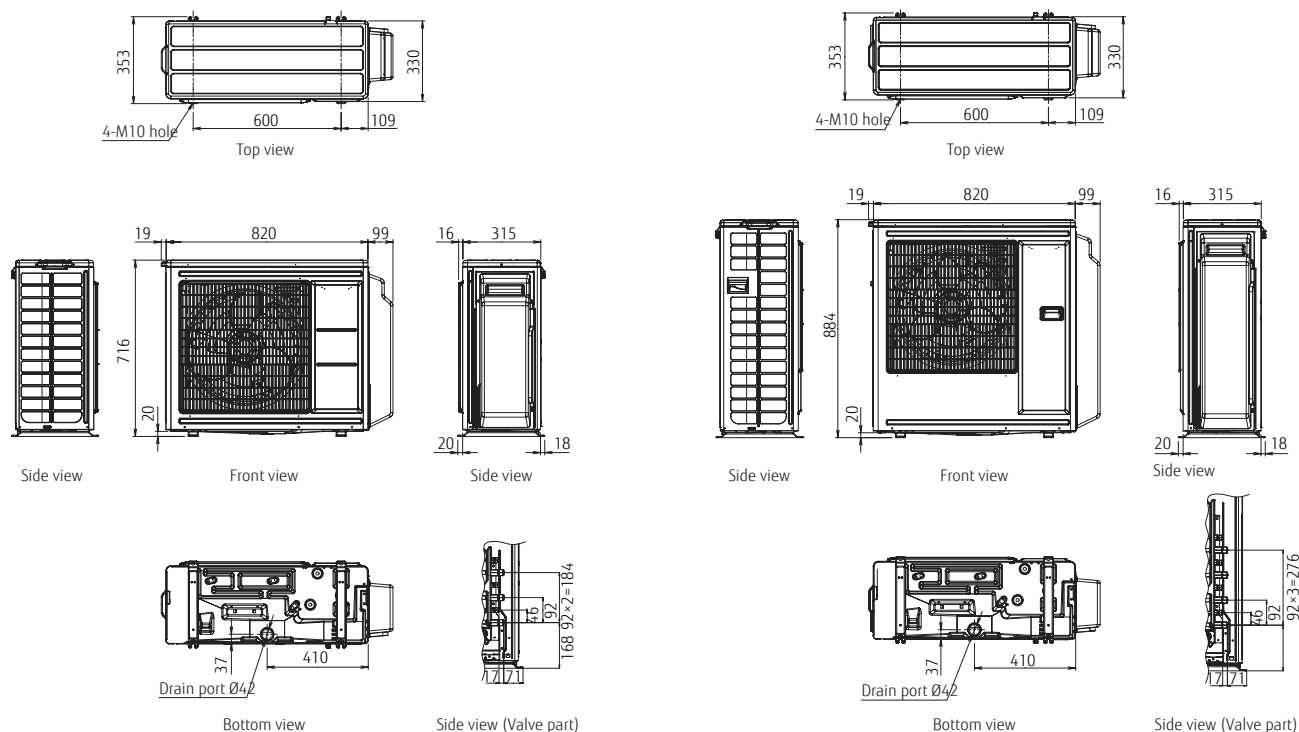
Pipe length : 5m Height difference : 0m (Outdoor unit - Indoor unit)

Dimensions



(Unit : mm)








Model: AOA24CBTA3

Model: AOA30CBTA4



3-unit, 4-unit Multi-split Connectable Indoor Units

Type	3-unit	4-unit
Model name	AOAH24CBTA3	AOAH30CBTA4
Multi-split Type Outdoor Unit		
Capacity (kW)	6.0	7.5
	Cooling	7.5
	Heating	-

Indoor Unit	BTU	kW Class	3-unit	4-unit
 ASAH09/12CMCA	9,000	2.5	●	●
	12,000	3.5	●	●
 ASAH18/24*CMTA	18,000	5.0	●	●
	24,000	7.0	●	●
 ASAH09/12CETA  ASAH09/12CETA-B	9,000	2.5	●	●
	12,000	3.5	●	●
 AUAH12/14/18CVLA	12,000	3.5	●	●
	14,000	4.0	●	●
	18,000	5.0	●	●
 ARAH09/12/14CSLAP  ARAH18CSLAP	9,000	2.5	●	●
	12,000	3.5	●	●
	14,000	4.0	●	●
 ARAH24CMTAP*	18,000	5.0	●	●
	24,000	6.0	●	●

* 4-unit type only

3-unit, 4-unit Multi-split Combination Table

Cool Beauty Design Wall Mounted

The exterior design harmonizes beautifully with any decor and adds comfortable elegance to the room. The light, elegant and threedimensional expression achieved by the curved surface is beautiful from any angle.



Slim design Duct

The main unit is hidden in the wall, making the room look neat and tidy. The slim design allows installations where ceilings are narrow.



3-unit Multi-split

AOAH24CBTA3	Combination of Indoor Units		
2-unit connection	9	9	-
	12	9	-
	14	9	-
	18	9	-
	12	12	-
	14	12	-
	18	12	-
	14	14	-
3-unit connection	9	9	9
	12	9	9
	14	9	9
	18	9	9
	12	12	9
	14	12	9

4-unit Multi-split

AOAH30CBTA4	Combination of Indoor Units				
2-unit connection	18	9	-	-	
	24	9	-	-	
	18	12	-	-	
	24	12	-	-	
	14	14	-	-	
	18	14	-	-	
	24	14	-	-	
	18	18	-	-	
	24	18	-	-	
	24	24	-	-	
	3-unit connection	9	9	9	-
		12	9	9	-
		14	9	9	-
		18	9	9	-
		24	9	9	-
		12	12	9	-
14		12	9	-	
18		12	9	-	
24		12	9	-	
14		14	9	-	
18		14	9	-	
24		14	9	-	
18		18	9	-	
12		12	12	-	
14		12	12	-	
4-unit connection		18	14	14	-
	9	9	9	9	
	12	9	9	9	
	14	9	9	9	
	18	9	9	9	
	12	12	9	9	
	14	12	9	9	
	18	12	9	9	
	14	14	9	9	
	12	12	12	9	
	14	12	12	9	
	14	14	12	9	
	12	12	12	12	
	9	9	9	9	
	12	9	9	9	
	14	9	9	9	
18	9	9	9		
12	12	9	9		
14	12	9	9		
18	12	9	9		
14	14	9	9		
12	12	12	9		
14	12	12	9		
14	14	12	9		
12	12	12	12		

3-unit, 4-unit Multi-split Indoor Units Specifications



Compact Wall mounted

NEW



Model No.	Indoor unit				ASAH09CETA ASAH09CETA-B	ASAH12CETA ASAH12CETA-B	
kW Class					kW	2.5	3.5
Power Source					Single-phase, ~230V, 50Hz		
Sound Pressure Level	Cooling	H/M/L/Q	dB(A)	43/36/30/21			44/37/30/21
Airflow Rate	Cooling	H/M/L/Q	m ³ /h	770/560/430/250			800/600/450/250
Net Dimensions H × W × D					mm	295 × 950 × 230	295 × 950 × 230
Weight					kg(lbs)	11.5 (25)	11.5 (25)
Connection Pipe Diameter	Liquid/Gas		mm	6.35/9.52			6.35/9.52

Compact Wall mounted

NEW



Model No.	Indoor unit				ASAH09CMCA	ASAH12CMCA	
kW Class					kW	2.5	3.5
Power Source					Single-phase, ~230V, 50Hz		
Sound Pressure Level	Cooling	H/M/L/Q	dB(A)	43/36/30/21			44/37/30/21
Airflow Rate	Cooling	H/M/L/Q	m ³ /h	770/560/430/250			800/600/450/250
Net Dimensions H × W × D					mm	270 × 834 × 222	270 × 834 × 222
Weight					kg(lbs)	10 (22)	10 (22)
Connection Pipe Diameter	Liquid/Gas		mm	6.35/9.52			6.35/9.52

Wall mounted

NEW



Model No.	Indoor unit				ASAH18CMTA	ASAH24CMTA	
kW Class					kW	5.0	7.0
Power Source					Single-phase, ~230V, 50Hz		
Sound Pressure Level	Cooling	H/M/L/Q	dB(A)	45/40/35/29			49/40/35/29
Airflow Rate	Cooling	H/M/L/Q	m ³ /h	980/810/640/510			1170/850/640/510
Net Dimensions H × W × D					mm	280 × 980 × 240	280 × 980 × 240
Weight					kg(lbs)	12.5(27)	12.5(27)
Connection Pipe Diameter	Liquid/Gas		mm	6.35/12.70			6.35/12.70



Compact cassette Grid type

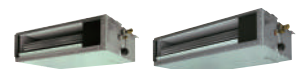
NEW



Model No.	Indoor unit			AUAH12CVLA	AUAH14CVLA	AUAH18CVLA
kW Class	kW			3.5	4.0	5.0
Power Source				Single-phase, ~230V, 50Hz		
Sound Pressure Level	Cooling	H/M/L/Q	dB(A)	37/34/31/28	38/35/32/29	42/37/33/29
Airflow Rate	Cooling	H/M/L/Q	m ³ /h	610/530/470/410	680/580/490/410	750/610/520/410
Net Dimensions H × W × D	mm			245 × 570 × 570	245 × 570 × 570	245 × 570 × 570
Weight	kg(lbs)			15 (33)	15 (33)	15(33)
Panel				UTG-UFYF-W	UTG-UFYF-W	UTG-UFYF-W
Connection Pipe Diameter	Liquid/Gas	mm		6.35/9.52	6.35/9.52	6.35/12.70

Mini duct type

NEW



Model No.	Indoor unit			ARAH09CSLAP	ARAH12CSLAP	ARAH14CSLAP	ARAH18CSLAP
kW Class	kW			2.5	3.5	4.0	5.0
Power Source				Single-phase, ~230V, 50Hz			
Sound Pressure Level	Cooling	H/M/L/Q	dB(A)	29/26/24/23	31/27/25/23	35/30/27/23	33/29/26/23
Airflow Rate	Cooling	H/M/L/Q	m ³ /h	600/450/400/360	650/490/430/360	800/640/530/360	940/750/540/480
Net Dimensions H × W × D	mm			198 × 700 × 450	198 × 700 × 450	198 × 700 × 450	198 × 900 × 450
Weight	kg(lbs)			15.5 (34)	15.5 (34)	15.5 (34)	18.5 (41)
Connection Pipe Diameter	Liquid/Gas	mm		6.35/9.52	6.35/9.52	6.35/9.52	6.35/12.70
External static pressure	Pa			0 to 30	0 to 30	0 to 50	0 to 50
Drain pump				Standard	Standard	Standard	Standard

Medium static pressure duct type

NEW



Model No.	Indoor unit			ARAH24CMTAP
kW Class	kW			7.0
Power Source				Single-phase, ~230V, 50Hz
Sound Pressure Level	Cooling	H/M/L/Q	dB(A)	38/33/30/27
Airflow Rate	Cooling	H/M/L/Q	m ³ /h	1500/2270/1020/860
Net Dimensions H × W × D	mm			240 × 1,000 × 700
Weight	kg(lbs)			32
Connection Pipe Diameter	Liquid/Gas	mm		6.35/12.7
External static pressure	Pa			50 to 150

2023 New Products
PRODUCT CATEGORY
CONTROL SYSTEM
& OPTIONAL PARTS





All indoor units are provided with wireless or wired remote controllers as standard equipment. Other options, such as individual and central remote controllers, are also available.

Wired remote controller (with touch panel)

UTY-RNRYZ5



Easy operation due to large high-resolution STN-LCD touch panel screen

- Touch screen LCD
- Built-in daily/weekly timer (ON/OFF, temperature, modes)
- Backlit screen for easy operation in the dark.
- Room temperature display
- Controls up to 16 indoor units
- Supports 12 languages: Chinese, Dutch, English, French, German, Greek, Italian, Polish, Portuguese, Russian, Spanish, and Turkish
- nonpolar 2-core type

Up to
16 indoor units

Up to
1 group

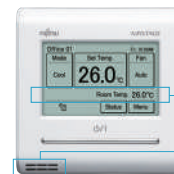
High performance and compact size

A single remote controller controls each connected indoor unit and provides a weekly timer function and a variety of energy-saving options.



Accurate control for comfort

A thermo sensor built into the remote controller monitors room temperature accurately.



Room temperature display

Room temperature sensor

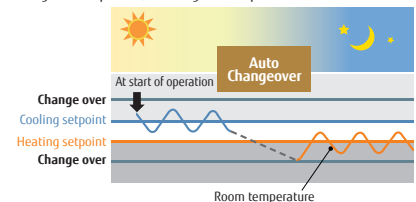
Energy saving controls

Custom Auto

- Maintains 2 separate setpoints for heating and cooling operations.
- Automatically switches between heating and cooling modes.

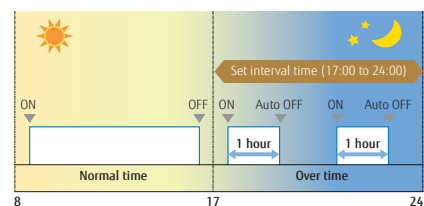
* Not available for some models

Cooling set temp. 27°C, Heating set temp. 26°C



Auto-off timer

- While the Auto-timer is activated, if the set off time is specified as, for example, one hour, the power will automatically turn off one hour after the start of operation.
- A desired time frame can be specified for the Auto-off timer.
- The off-time can be set from 30 to 240 minutes.



e.g.) Between 17:00 and 24:00 (over time hours), when the 1 hour set off time has elapsed, the system will automatically turn off the indoor unit as it

2-setting weekly timer

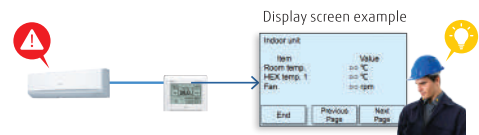
Set temperature auto return

Setting temperature range limitation

NEW Refrigerant cycle monitor (Option)

Wired Remote Controller (Touch Panel) will support to display some sensor values for maintenance and service support.

* This function is only supported by split units, using the H-Serial communication protocol! Example: ASYH30KMTB



Specifications

Model name	UTY-RNRYZ5
Power Source	DC 12 V
Dimensions (H × W × D) (mm)	120 × 120 × 20.4
Weight (g)	220

DC 12 V is supplied by the indoor unit.

Wired Remote Controller

UTY-RLRY



- Various timer setup (ON / OFF / WEEKLY) are possible.
- The room temperature can be controlled by detecting the temperature accurately with Built-in thermo sensor.
- When a failure occurs, the error code is displayed.
- Error history. (Last 16 error codes can be accessed.)
- 2-wire type

Maximum Controllable
16 indoor units

Maximum Controllable
1 Group

High performance and compact size

In addition to the individual control, weekly timer, and various energy saving controls can be realized using only one remote controller.



High visibility and easy operation

- "Mode", "Set Temp", and "Fan" are displayed at large size on the top screen.
- Each function to be set is indicated by an icon.
- Control guide is displayed and operation is simple and straightforward.



Set contents can be displayed clearer with large LCD.

Sophisticated control buttons
Simple operation with easy 4-way navigation pad

Wired Remote Controller

UTY-RNNYM



Maximum Controllable
16 indoor units

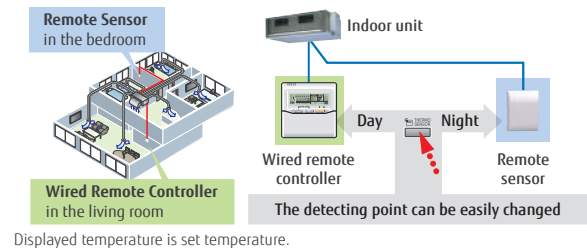
Maximum Controllable
1 Group

- Simple operation with Built-in Weekly / Daily Timer.
- Control up to 16 indoor units.
- Up to 2 wired remote controllers can be connected to a single indoor unit.

Accurate and comfortable

Indoor temperature can be detected accurately by the inclusion of a thermo sensor in the body of the wired controller. This wired remote controller and the optional remote sensor allows flexibility in sensor location, suitable for all requirements.

Example of changing sensor



Displayed temperature is set temperature.

Built-in timers

Weekly timer: Possible to set ON/OFF time to operate twice each day of the week.

Setback timer: Possible to set temperature for two times spans and for each day of the week.

At "Weekly timer" + "Set back timer" setup

Specifications

Model name	UTY-RLRY	UTY-RNNYM
Power Source	DC 12 V	DC 12 V
Dimensions (H × W × D) (mm)	120 × 120 × 17	120 × 120 × 18
Weight (g)	170	160

DC 12 V is supplied by the indoor unit.

Compact Wired Remote Controller

UTY-RCRYZ1



- Simple design to match the stylish interior
- Easy to install : Body of controller is designed to fit in European standard junction box
- Can be operated both by wireless and wired remote controller.
- 2-wire type

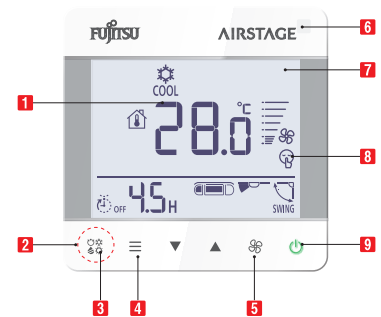
Maximum Controllable
1 single indoor unit

Maximum Controllable
1 Group

Large screen and simple display

- Although the size is compact, the screen is large
- Large letters makes it easy to see
- Operation is simple and easy-to-understand

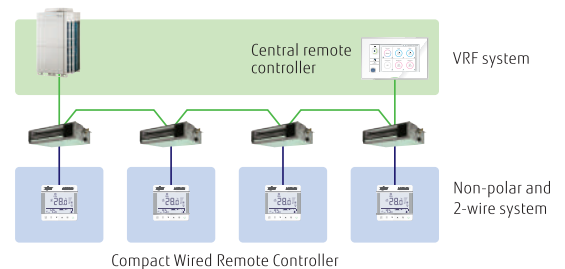
- 1 Visible large letter
- 2 Touch key (Frequently-used operation is placed on the direct button)
- 3 Operation mode
- 4 Menu
- 5 Air flow
- 6 Built in IR reciever
- 7 LCD with backlight is clearly visible in the dark
- 8 Easy-to-understand pictograph display
- 9 LED is mounted for the ON/OFF key (Green light on when R.C. is turned on)



System overview

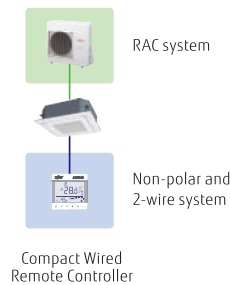
VRF connection

One indoor unit and one remote controller are connected in one non-polar and 2-wire remote controller system.



RAC (Room air conditioner) connection

One indoor unit and one remote controller are connected in one non-polar and 2-wire remote controller system.



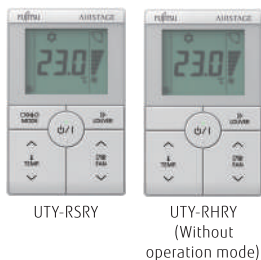
Specifications

Model name	UTY-RCRYZ1
Power Source	DC12V
Dimensions (H × W × D) (mm)	86 × 86 × 44
Weight (g)	135

DC 12 V is supplied by the indoor unit.

Simple Remote Controller

UTY-RSRY / UTY-RHRY (Without operation mode)



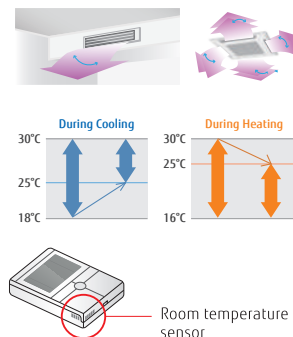
Compact remote controller provides access to basic functions

- Up to 16 indoor units can be controlled with one remote controller.
- Suitable for hotels or offices as it is easily operated with no complex functions.
- Stylish design: Simple design to match the stylish interior.
- Large LCD screen & simple operation buttons
- Backlight: White colored backlight on monitor enable easy operation in dark.
- 2-wire type

Maximum Controllable
16 indoor units
Maximum Controllable
1 Group

Corresponding to various applications

- **Vertical louver control:** Vertical air flow direction can be adjusted for Duct types with auto louver and Cassette types, which are installed in hotels and conference rooms, can be adjusted.
- **Room temperature set point limitation:** The Simple Remote Controller can manage to energy saving operation in small buildings without the central control unit.
- **Built in room temperature sensor:** The Simple Remote Controller detects actual room temperature and controls room climate accuracy.



Simple Remote Controller

UTY-RSNYM



UTY-RSNYM

Compact remote controller provides access to basic functions

- Up to 16 indoor units can be controlled with one remote controller.
- Suitable for hotels or offices as it is easily operated with no complex functions.
- Backlight enables easy operation in a darkened room.
- 3-wire type

Maximum Controllable
16 indoor units
Maximum Controllable
1 Group

Easy-to-use operation

- Provides access to basic operations, such as Start / Stop, Fan control, Operation mode switching, and Room temperature setting.
- A large On / Off button is provided in the centre of the remote controller for easy operation.
- Can be used jointly with other individual control unit.
- Following an error display, diagnostics can be carried out on the controller.

Specifications

Model name	UTY-RSRY	UTY-RHRY	UTY-RSNYM
Power Source	DC 12 V	DC 12 V	DC 12 V
Dimensions (H × W × D) (mm)	120 × 75 × 19.4	120 × 75 × 19.4	120 × 75 × 19.4
Weight (g)	120	120	120

DC 12 V is supplied by the indoor unit.

Wired Remote Controller

UTY-RVNYM



Hi-grade individual control using various functions.

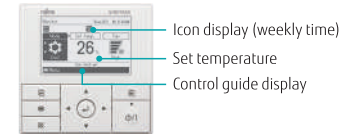
- 3.7-inch LCD backlight screen.
- Supporting various Energy Saving functions with simple operation.
- Multiple Language Support.
(English, German, French, Spanish, Russian, Portuguese, Italian, Greek, and Turkish)

Maximum Controllable
16 indoor units

Maximum Controllable
1 Group

High visibility and Easy operation

- Icon display of effectual functions.
- Main functions in large icons: "Mode", "Set Temp", and "Fan".
- Easy to operate by Control guide display.
- Simple operation with easy 4-way navigation pad.



High performance and compact size

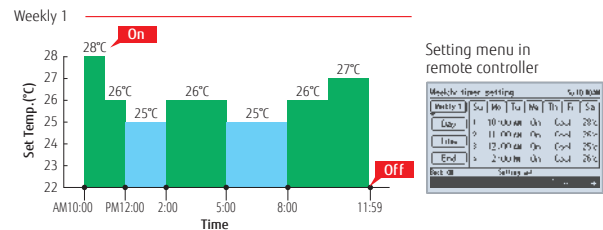
- In addition to the individual control, various energy saving controls can be realized using only one remote controller.



Various energy saving control

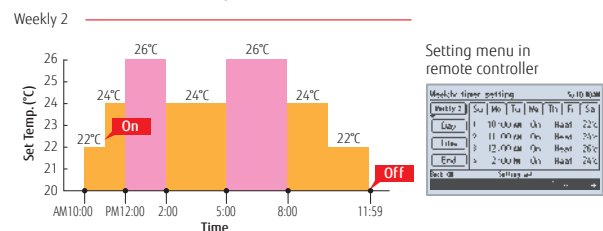
Weekly Timer function

- Can be set up to 8 times per day (On/Off, mode, Temp)
- 2 pattern settings (i.e. Summer/Winter setting) are available.



Auto OFF Timer

- Set Temperature Auto Return
- Set Temperature Upper and Lower Limit Setting

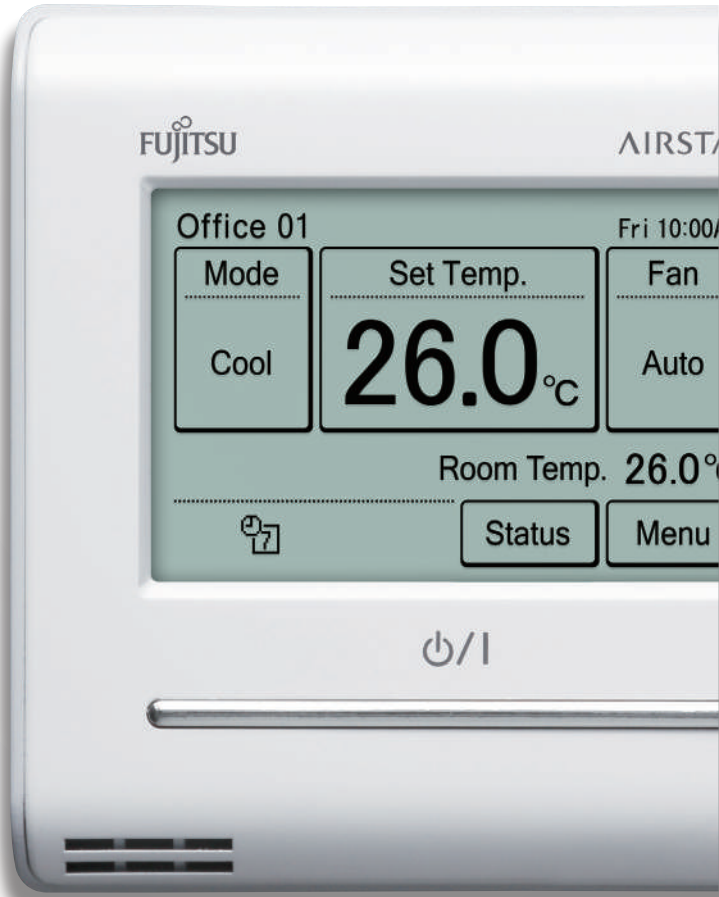


Specifications

Model name	UTY-RVNYM
Power Source	DC 12 V
Dimensions (H × W × D) (mm)	120 × 120 × 21.3
Weight (g)	220

DC 12 V is supplied by the indoor unit.

Control System List For Split / Multi-split



Controller System List (available) For Split / Multi-split

Country		Split					
Type		Wall Mounted			Cassette		
Model No.		ASAG09/12CMTA	ASAG18CMTA	ASAG24/30CMTA	AUAH24/36CRLA		
Controllers	Wired Remote Controller		● UTY-RNRYZ5+ UTY-TWRXZ2	● UTY-RNRYZ5+ UTY-TWRXZ2	● UTY-RNRYZ5+ UTY-TWRXZ2	● UTY-RNRYZ5+ UTY-TWRXZ2	
			● UTY-RLRY+ UTY-TWRXZ2	● UTY-RLRY+ UTY-TWRXZ2	● UTY-RLRY+ UTY-TWRXZ2	● UTY-RLRY+ UTY-TWRXZ2	
			● UTY-RCRYZ1+ UTY-TWRXZ2	● UTY-RCRYZ1+ UTY-TWRXZ2	● UTY-RCRYZ1+ UTY-TWRXZ2	● UTY-RCRYZ1+ UTY-TWRXZ2	
							
							
	Simple Remote Controller	 2-wire type	● UTY-RSRY, UTY-RHRY+ UTY-TWRXZ2	● UTY-RSRY, UTY-RHRY+ UTY-TWRXZ2	● UTY-RSRY, UTY-RHRY+ UTY-TWRXZ2	● UTY-RSRY, UTY-RHRY+ UTY-TWRXZ2	
	Wireless Remote Controller						
	IR Receiver Unit with Wireless Remote Controller	 For Duct  For Cassette				● UTY-LBTYC	
	Interface	MODBUS Convertor		● UTY-VMSX	● UTY-VMSX	● UTY-VMSX	● UTY-VMSX
		KNX Convertor		● UTY-VKSX	● UTY-VKSX	● UTY-VKSX	● UTY-VKSX
Wireless LAN Interface		 3 wire RC line type  CN connector type	● UTY-TFSXF3	● UTY-TFSXF3	● UTY-TFSXF3	● UTY-TFSXZ2	
External switch controller			● UTY-TERX+ UTY-TWRXZ2	● UTY-TERX+ UTY-TWRXZ2	● UTY-TERX+ UTY-TWRXZ2	● UTY-TERX+ UTY-TWRXZ2	
Network Convertor for Single Split		 DC Power Supply type  AC Power Supply type	● UTY-VTGX+ UTY-TWRXZ2 or UTY-VTGXV+ UTY-TWRXZ2	● UTY-VTGX+ UTY-TWRXZ2 or UTY-VTGXV+ UTY-TWRXZ2	● UTY-VTGX+ UTY-TWRXZ2 or UTY-VTGXV+ UTY-TWRXZ2	● UTY-VTGX+ UTY-TWRXZ2 or UTY-VTGXV+ UTY-TWRXZ2	

Multi-split						
	Wall Mounted		Compact Cassette	Mini Duct	Medium Static Pressure Duct	
	ASAH09/12CMCA	ASAH18/24*CMTA	ASAH09/12CETA ASAH09/12CETA-B	AUAH12/14/18CVLA	ARAH09/12/14/18CSLAP	ARAH24CMTAP*
	● UTY-RNRYZ5+ UTY-TWRXZ2	● UTY-RNRYZ5+ UTY-TWRXZ2	● UTY-RNRYZ5+ UTY-TWRXZ2	● UTY-RNRYZ5	● UTY-RNRYZ5	● UTY-RNRYZ5
	● UTY-RLRY+ UTY-TWRXZ2	● UTY-RLRY+ UTY-TWRXZ2	● UTY-RLRY+ UTY-TWRXZ2	● UTY-RLRY	● UTY-RLRY	● UTY-RLRY
	● UTY-RCRYZ1+ UTY-TWRXZ2	● UTY-RCRYZ1+ UTY-TWRXZ2	● UTY-RCRYZ1+ UTY-TWRXZ2	● UTY-RCRYZ1	● UTY-RCRYZ1	● UTY-RCRYZ1
	● UTY-RSRY+ UTY-TWRXZ2	● UTY-RSRY+ UTY-TWRXZ2	● UTY-RSRY+ UTY-TWRXZ2	● UTY-RSRY	● UTY-RSRY	● UTY-RSRY
				● UTY-LNTY		
					● UTY-LBTYM	
	● UTY-VMSX	● UTY-VMSX	● UTY-VMSX	● UTY-VMSX*1	● UTY-VMSX	● UTY-VMSX
	● UTY-VKSX	● UTY-VKSX	● UTY-VKSX	● UTY-VKSX*1	● UTY-VKSX	● UTY-VKSX
	● UTY-TFSXF3	● UTY-TFSXF3	● UTY-TFSXF3	● UTY-TFSXF3	● UTY-TFSXZ1	● UTY-TFSXZ1
	● UTY-TERX+ UTY-TWRXZ2	● UTY-TERX+ UTY-TWRXZ2	● UTY-TERX+ UTY-TWRXZ2	● UTY-TERX+ UTY-TWRXZ2	● UTY-TERX	● UTY-TERX
	● UTY-VTGX+ UTY-TWRXZ2 or UTY-VTGXV+ UTY-TWRXZ2	● UTY-VTGX+ UTY-TWRXZ2 or UTY-VTGXV+ UTY-TWRXZ2	● UTY-VTGX+ UTY-TWRXZ2 or UTY-VTGXV+ UTY-TWRXZ2	● UTY-VTGX+ UTY-TWRXZ2 or UTY-VTGXV+ UTY-TWRXZ2	● UTY-VTGX UTY-VTGXV	● UTY-VTGX UTY-VTGXV

Auto Louver Grille Kit

UTD-GXSA-W / UTD-GXSB-W

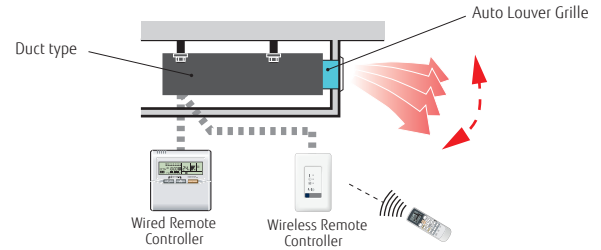


Simple flat Auto Louver will provide comfort airflow and harmonize with luxury interior.

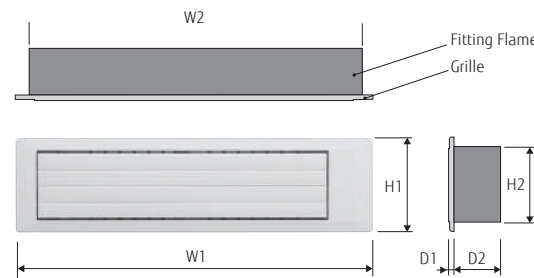


Flexible Control

- **Operation with indoor unit**
Auto Louver can be operated by synchronizing remote controller of indoor unit.
- **UP and Down auto swing**
 - Auto airflow direction and auto swing
 - 4 steps selectable
- **Auto-closing louver**
When operation of indoor unit is stopped, the louver will automatically close.



Dimensions



Model Name	Unit:mm					
	W1	W2	H1	H2	D1	D2
UTD-GXSA-W	683	645	180	148	9	84
UTD-GXSB-W	883	845				



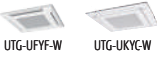

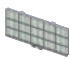

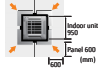
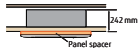


Specifications

Model name		UTD-GXSA-W	UTD-GXSB-W
Applicable Indoor Unit		ARXG09/12/14KSLAP	ARXG18KSLAP
Power Supply		Connecting with Control box of indoor unit	
Fixing of Auto Louver Grille		Screw fixing to Flange or Square Duct	
Extension Square Duct Limit		1.0m (Max. duct length between indoor unit and Grille)	
Net Dimension (H × W × D)		mm	180 × 683 × (84 + 9)
Weight	Net	kg	2.0 (4.4)
	Gross	(lbs)	3.0 (6.7)
Color		White	
Louver Motor		Stepping Motor	
Accessories		Fitting Flame, etc.	
Operation range	Cooling	°C	18 to 32
		% RH	80% or less
Operation range	Heating	°C	16 to 30

Optional Parts List For Split / Multi-split



Optional Parts List For Split / Multi-split

Country			Split	Multi-split	
Type			Cassette	Wall Mounted	
Model No.			AUAH24/36CRLA	ASAH09/12CMCA	ASAH18/24*CMTA
Others	Human sensor kit		● UTY-SHZXC		
	Remote Sensor Unit				
	Cassette Grille	 UTG-UFYF-W UTG-UKYC-W	● UTG-UKYC-W		
	Auto Louver Grille Kit				
	Long Life Filter Air Cleaning Filter			● UTR-FA16-5	● UTR-FA16-5
	Flange				
	Drain Pump Unit				
	Wide Panel / Additional Grille	 Indoor unit 500 Panel 600 (mm) 1000	● UTG-AKXA-W		
	Panel Spacer	 24.2 mm Panel spacer	● UTG-BKXA-W		
	Fresh Air Intake Kit	 For Compact Cassette For Cassette	● UTZ-VXRA		
	Air Outlet Shutter Plate	 For Compact Cassette For Cassette	● UTR-YDZK		
	Insulation Kit For High Humidity	 For Compact Cassette / Cassette	● UTZ-KXRA		
Remote controller holder					

Multi-split			
Wall Mounted	Compact Cassette	Mini Duct	Medium Static Pressure Duct
ASAH09/12CETA ASAH09/12CETA-B	AUAH12/14/18CVLA	ARAH09/12/14/18CSLAP	ARAH24CMTAP*
		● UTY-XSZX	● UTY-XSZX
	● UTG-UFYF-W		
		● UTD-GXTA-W (09/12/14) UTD-GXTB-W (18)	
● UTR-FA16-5			● UTD-LFDB
	● UTZ-VXRA		
	● UTR-YDZK		
	● UTZ-KXRA		

A blue sky with a white cloud in the upper right corner. At the bottom, a city skyline is visible with several skyscrapers of varying heights and colors, including a prominent one with a red and white antenna on top.

SATISFACTION
FOR
ALL CUSTOMERS



FUJITSU GENERAL

Notice regarding specifications

I.U. = Indoor Unit O.U. = Outdoor Unit Qu = Quiet * = Not decided yet

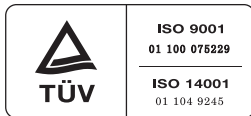
- Specifications and design are subject to change without notice for future improvement.
- For further details, check with our authorized dealers.
- Cooling and heating capacities are based on the following conditions:

Cooling	Indoor temp. : 27°C DB/19°C WB Outdoor temp.: 35°C DB/24°C WB	Heating	Indoor temp. : 20°C DB Outdoor temp.: 7°C DB/6°C WB
---------	--	---------	--

- Performance tests are conducted in accordance with EN14511.
- Seasonal efficiency tests are conducted in accordance with EN14825.
- Sound power tests are conducted in accordance with EN12102.



Fujitsu General (Thailand) Co., Ltd.



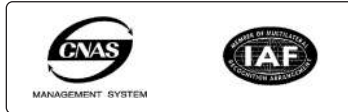
ISO 9001 Certification number: 01 100 075229
ISO 14001 Certification number: 01 104 9245

Fujitsu General (Shanghai) Co., Ltd.



ISO 9001 Certification number: 01 100 79269
ISO 14001 Certification number: CNB312244-UK

Fujitsu General Central Air-conditioner (Wuxi) Co., Ltd.



ISO 9001 Certification number: 15917020073R5M
ISO 14001 Certification number: 15918E20021R5M

- The products and equipment listed in this catalog contain fluorinated greenhouse gases.
- "AIRSTAGE" is a worldwide trademark of Fujitsu General Limited, and is a registered trademark in Japan and other countries and regions.
- "FGLair" is a trademark of Fujitsu General Limited worldwide.
- "Android" is a trademark of Google LLC.
- Other company and product names mentioned in this document may be the registered trademarks, trademarks or trade names of their respective owners.

Distributed by:

WINFINITY (S'PORE) PTE LTD

19 Greenwich Drive, #03-00 Kerry Logistics Centre-Tampines, Singapore 534021
Tel: 6844 2220 | Fax: 6844 2221 | Email: enquiry@winfinity.com.sg
www.winfinity.com.sg